



Woonallee Simmentals

18th Annual Elite Production Sale

Thursday 13th February 2025

For the very best in Simmental, whatever the requirement

Reference Sires



BANDEEKA RAFFLES (P)



WOONALLEE Q73 (P)



WOONALLEE SHOWSTOPPER (PP)



MILLAH MURRAH REMBRANDT (PP)



WOONALLEE S.K.W. (PP)



WOMBRAMURRA Q129 (PP)



WOONALLEE R475 (PP)



WOONALLEE P393 (PP)

Woonallee Simmentals

18th Annual Elite Production Sale

Thursday 13th February 2025

Inspections from 10:30am – Sale at 1pm

OFFERING

109 Traditional, Black
and SimAngus bulls

Contact Tom & Lizzy Baker

PMB 52, Millicent SA 5280 Phone 0428 475 066

Email: tbaker@bakergroup.com.au

Tom Wilding-Davies 0429 570 504



Tom Dennis 0427 975 207
Ross Milne 0408 057 558



WELCOME

2024 certainly came with many challenges and the dry start was one of the worst we have ever seen in this district and South Australia as a whole.

Hay and fodder supplies were quickly used up and plenty was purchased to fill the gap required. Although hard to watch and navigate, it was pleasing to see our selection for easy keeping cattle with efficiency, constitution and fertility pay off and allowed us to still return a preg test result of over 90% which was incredible considering what the cow herd had endured.

It has been great to see the recent weaner sales in South Australia feature many drafts of Woonallee blood calves. Although 30-40kgs lighter due to the season, they showed the softness, fleshing and weight for age they normally have. They sold to strong demand to both backgrounders and feedlots with many return buyers back to purchase these cattle. An interesting trend was the traditional sired calves were making the same price per kilogram as the black calves! Thank you to all of our clients for presenting these cattle in these feature weaner sales both in SA and Victoria; it is great to see the investment you have made benefiting you financially.

We are proud of this year's draft of bulls. They had to work pretty hard to get to where they are today on limited paddock feed and as we have often said, selection pressure in large contemporary groups is one of our greatest strengths as the best rise to the top the old-fashioned way.

We firmly believe our product has extra longevity because of this and you should not need to be replacing bulls after 1 or 2 years. The draft of bulls will be slightly lighter in weight due to the season but will present in good order and ready to work. As in the last few years these bulls are prepared on a silage ration with limited grain.

We will not be holding a field day as part of the SA beef week due the change of dates. We believed it was going to be too hard on both man and beast if we had a field day on the Tuesday and the sale on the Thursday. We are happy to accommodate anyone who would like to inspect the bulls privately prior to the sale and feel it is a better way to view the cattle and help with your selection. Videos of all the bulls will be available from the 20th of January to assist those who can't attend.

Please feel free to contact us if you require any further information and we look forward to seeing you sale day.

Regards

Tom and Lizzy

2025 SALE

FIELD DAY

Woonallee will NOT be participating in the South Australian Beef Field Days due to the change of dates. Please get in touch if you would like a private tour before the sale.

SALE DAY – THURSDAY, 13TH FEBRUARY 2025

from 10:30am	Inspection of sale cattle
12:00pm	Light lunch will be available
1:00pm	Sale commences
After Sale	Dinner – All welcome

ACCOMMODATION

MILLICENT

Sandpipers 08 8733 2211
Sommerset Hotel-Motel 08 8733 2888
Evergreen B&B 0427 963 490
Millicent Lakeside Caravan Park 08 8733 1188
Hillview Caravan Park 08 8733 2806

PENOLA

Alexander Cameron Motel 08 8737 2200
Coonawarra Motor Lodge 08 8737 2364
Must @ Coonawarra (08) 8737 3444

SALE CATALOGUE DISCLAIMER: All reasonable care has been taken by the vendor and designer to ensure that the information provided in this catalogue is correct at the time of publication. However, neither the vendor, selling agents and designer make no other representations about the accuracy, reliability or completeness of any information provided in this catalogue and do not assume any responsibility for the use or interpretation of the information included in the catalogue.

SAFETY DISCLAIMER: The owners, employees and representatives of Woonallee accept no liability for any accidents that may occur at the Woonallee Sale Complex. Although such occurrences are rare, any persons attending the Woonallee Sale do so at their own risk.



FOR A MORE SUCCESSFUL LIVESTOCK BUSINESS

At Elders we believe that Stud Stock paves the journey for commercial livestock business. We can provide tailored advice on Livestock performance and management while also offering to support your program with qualified livestock experts and auctioneers.

From innovative conception and weaning solutions to national and global marketing options, Elders can help you achieve so much more.

Tom Dennis	Branch Manager	0427 975 207
Josh Reeves	Livestock Manager	0429 170 339
Nick Livingston	Territory Sales Manager	0439 951 288
Tony Wetherall	Stud Stock Manager, SA	0427 390 001
Ross Milne	Stud Stock Manager, VIC	0408 057 558

For more information, please contact Elders Naracoorte
12-14 Moyhall Road, Naracoorte SA 5271
P. 08 8765 7800
E. naracoorte@elders.com.au





AuctionsPlus

How to Register and Bid on AuctionsPlus

1

Go to www.auctionsplus.com.au to register at least 48 hours before the sale.

2

Select “**Sign Up**” in the top right hand corner.

3

Fill out your name, mobile number, email address and create a password.

4

Go to your emails and confirm the account.

5

Return to AuctionsPlus and log in.

6

Select “**Dashboard**” and then select “**Request Approval to Buy**”.

7

Fill in buyer details and once completed go back to Dashboard.

8

Complete buyer induction module (approx. 30 minutes).

9

AuctionsPlus will email you to let you know that your account has been approved.

10

Log in on sale day and connect to auction.

11

Bid using the two-step process – unlock the bid button and bid at that price.

12

If you are successful, the selling agent will contact you post sale to organise delivery and payment.

For more information please contact us on:

Phone: (02) 9262 4222

Email: info@auctionsplus.com.au

SALE INFO

HEALTH

Woonallee Simmentals has a JBAS score of 6 and eligible for all states in Australia including WA. All Bulls have received two shots plus a booster of 7 in 1, drenched with Eprinex Pour On and ear notched tested negative for pestivirus. Bulls have received two shots of Pestiguard with a booster due in November 2025. Bulls have all passed a semen and morphology test conducted by Nationwide Artificial Breeders.

DNA, COLOUR AND POLLED TESTING

All sale bulls have been tested for poll status, a 100K genomic test, sire verified and black bulls tested for colour aswell. This information is in the catalogue.

TRANSPORT

Falls transport will be in attendance and is the recommended carrier for interstate deliveries. Transport costs are the purchasers responsibility. Woonallee will deliver free of charge within a 250km radius of Woonallee.

TRANSFERS

All animals are registered with the Australian Simmental Breeders Association and are eligible for transfer. Please indicate on the buyer's instruction sheet if you would like your purchases to be transferred.

BUYER REGISTRATION

Buyers are requested to register with the selling agent prior to commencement of the sale and to display their registration number at the fall of the hammer. This sale will also be interfaced with Auctions Plus. Please see information on page 5 of this catalogue to register.

INSPECTION AND SALE TIMES

Sale animals will be yarded and available for inspection from 10:30am on sale day Thursday, 13th February. Selling to commence at 1.00pm sharp. Supplementary sheets available on sale day. Private inspection before sale day can be arranged by contacting Tom Baker on 0428 475 066. All times quoted are SA daylight savings time.

GST

All lots are sold exclusive of GST.

PHONE BIDDING

Please contact the selling agent to arrange phone bidding. Sale Complex number (08) 8734 3118 or contact Tom Dennis on 0427 975 207.

REBATES

A rebate of 2% is available to outside agents introducing buyers in writing to the selling agent prior to the sale and settling within 7 days.

INSURANCE

Woonallee recommends insuring all purchases at the fall of the hammer. An insurance representative will be available on sale day to help with this.

GUARANTEE

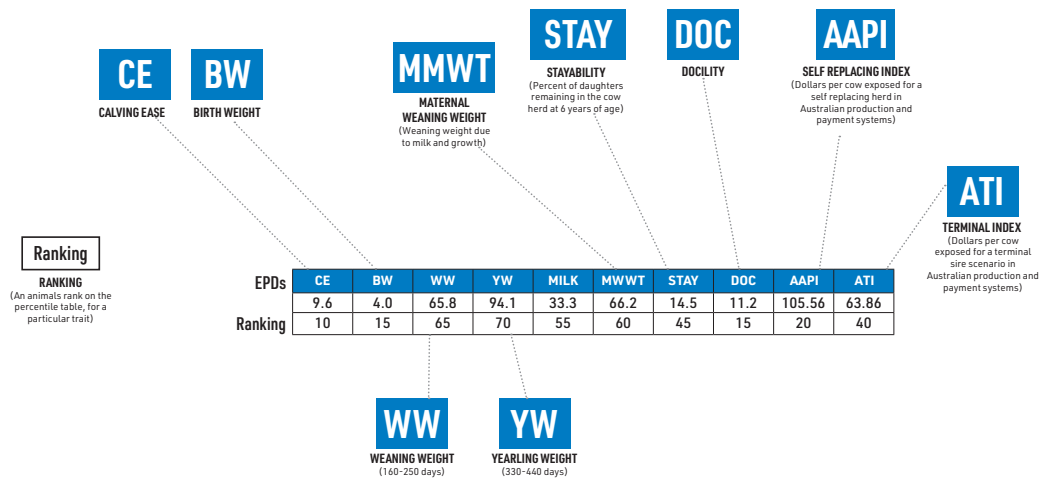
All cattle sold at Woonallee come with a two year structure and fertility guarantee. In the rare case a bull is found to be infertile or incapable of natural service, Woonallee will refund or replace the bull provided the problem is not caused by injury or disease incurred after taking delivery.

EPD INFO

With the introduction of the IGS performance recording system for Simmental cattle, IGS is the world's largest animal performance recording system.

One of the major changes is the breeding figures being reported as Estimate Progeny Differences (EPDs), rather than Estimated Breeding Values (EBVs). The difference between the two is simple.

Effectively, an EBV is an animal's own genetic value for a particular trait. However, the animal can only pass half of this onto their progeny. EPDs have the "half" already accounted for. That is, an EPD is the genetic merit of an animal's progeny – what they will pass onto their progeny.



Simmental - Traditional, Fullblood and Simbrah Register Breed Average

	CED	BW	WW	YW	MILK	MCE	MWWT	STAY	DOC	CW	REA	FAT	MARB	YG	AAPI	ATI	API	TI
EPD	5.11	5.70	69.77	101.18	33.03	3.57	67.87	13.63	8.71	20.87	0.79	-0.12	-0.09	-0.51	95.82	62.76	44.66	36.61

Black, Red, SimAngus and SPR Register Breed Average

	CED	BW	WW	YW	MILK	MCE	MWWT	STAY	DOC	CW	REA	FAT	MARB	YG	AAPI	ATI	API	TI
EPD	9.98	2.34	76.81	116.57	23.07	5.51	61.43	15.13	12.27	29.29	0.82	-0.08	0.07	-0.39	123.13	74.71	61.42	56.85

Polled and Coat Color Information:

PP - Homo Polled - the bull carries two copies of the polled gene

Homo Polled Homo Polled 100% Polled
Hetero Polled 100% Polled
Horned 100% Polled

Pp - Hetero Polled - the bull carries one polled gene and one horned gene

Hetero Polled Homo Polled 100% Polled
Hetero Polled 75% Polled, 25% Horned
Horned 50% Polled, 50% Horned

Homo Black - the bull carries two copies of the black gene

Homo Black Homo Black 100% Black

Hetero Black 100% Black
Red 100% Black

Hetero Black - the bull is black in color, but carries one black gene and one red gene. Black is dominant to red, so the red color is not expressed when it is paired with a black gene.

Hetero Black Homo Black 100% Black
Hetero Black 75% Black, 25% Red
Red 50% Black, 50% Red

Red - the bull carries two copies of the red gene. This example assumes the bull is diluter free.

Red Homo Black 100% Black
Hetero Black 75% Black, 25% Red
Red 100% Red

Top 10% EPD

Top 25% EPD

WHERE OUR HERD IS TRENDING.

When we looked at these graphs, we thought they would be an interesting addition to show our clients where our female herd is heading from a genetic standpoint. Although we base the majority of our selection and decision making on phenotype, we found it interesting to see the genetic trend heading in the same direction as the females themselves!!!

The key points:

Calving Ease & Maternal Calving ease – more than doubled over an 8-year period.

Birth Weight - decreased from +6 to +3 on average.

Weaning Weight – increased steadily over the period.

Carcase Weight – significant improvement.

Marbling – huge jump in this trait.

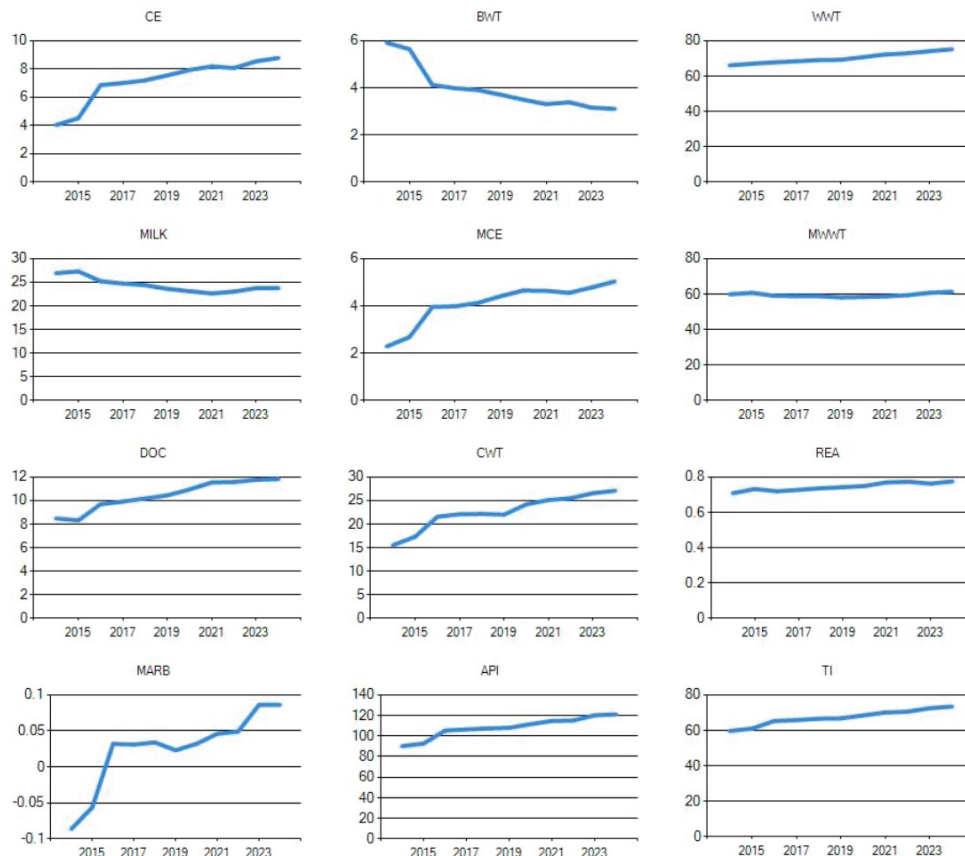
API & TI – both have improved and API has improved considerably.

We have only highlighted a few of these points however these are also some of the more important traits when looking at a profitable beef herd.

We have been pretty clear in what we are trying to achieve at a seedstock level and that is to produce an animal that is born easily, grows fast and meets market specification at any age.

When you look into what these graphs tell you, it is exactly what we are aiming for. A simple and balanced approach to breeding cattle can sometimes be the best way to go about it!

EPD Trend Enroled Females



Traditional Bulls

Lots 1 - 21



Lot 1 Woonallee Kiwi U316



Lot 2 Woonalle Raffles U210



[VIEW ALL LOTS ONLINE](#)



Lot 3 Woonallee Raffles U119

LOT 1 WONALLEE KIWI U316

BORN: 15/4/2023
 REG: WEEPU316
 EYE: 100/100
 COLOUR: Red
 HORN: Polled

• KERRAH D859
SIRE WONALLEE KIWI Q73
 • WOONALLEE DAISY N95

• PHS BANK ROLL 345B
DAM WONALLEE POLLY N128
 • WOONALLEE POLLY H24

	CE	BW	WW	YW	MILK	MCE	MWWT	STAY	DOC	CW	REA	MARB		API	TI
EPD	+13.4	+2.1	+79.3	+110.2	+31.9	+6.9	+71.6	+14.2	+12.2	25.2	0.89	0.03	INDEX	122.99	77.35
Acc	0.4	0.46	0.41	0.41	0.11	0.17	0.21	0.26	0.33	0.33	0.32	0.31	%RK	4	4
%RK	2	5	25	30	15	10	15	45	20	25	25	15	%RK	4	4

NOTES: An impressive young polled sire that we used in our Autumn joining. Long bodied with incredible performance and growth, U316 has all the attributes of a front-end herd sire. A tremendous set of data validates this sire being in the top 2% for calving ease, top 5% for birth weight, top 4% for API & TI and top 15% for marbling. A complete package with so much to offer.

PURCHASER: _____ PRICE: \$ _____



LOT 2 WONALLEE RAFFLES U210

BORN: 5/4/2023
 REG: WEEPU210
 EYE: 100/100
 COLOUR: Light Red
 HORN: Polled

• BANDEEKA POWER PACK
SIRE BANDEEKA RAFFLES
 • BANDEEKA NEMMY N006

• WOONALLEE LAS VEGAS
DAM WONALLEE ROSY Q393
 • WOONALLEE ROSY J56

	CE	BW	WW	YW	MILK	MCE	MWWT	STAY	DOC	CW	REA	MARB		API	TI
EPD	+0.2	+8.4	+89.4	+130.0	+30.7	+0.7	+75.4	+16.8	+12.8	4.1	0.36	-0.06	INDEX	99.05	70.71
Acc	0.4	0.47	0.41	0.41	0.08	0.16	0.19	0.26	0.33	0.33	0.32	0.29	%RK	45	45
%RK	100	100	5	5	25	95	5	15	15	100	100	45	%RK	45	45

NOTES: The first of the Bandedeka Raffles to sell and they have lived up to the expectation. U210 is soft and easy fleshing with huge depth and capacity with a strong polled sire's head. His dam is one of our very best Vegas daughters and continues to breed a good one every year. Top 5% for weaning, yearling & maternal weaning weight, top 10% for fat and top 15% for stay and docility.

PURCHASER: _____ PRICE: \$ _____

LOT 3 WONALLEE RAFFLES U119

BORN: 29/3/2023
 REG: WEEPU119
 EYE: 100/100
 COLOUR: Light Red
 HORN: Polled

• BANDEEKA POWER PACK
SIRE BANDEEKA RAFFLES
 • BANDEEKA NEMMY N006

• WOONALLEE NOTICE N141
DAM WONALLEE IRENE R181
 • WOONALLEE IRENE M174

	CE	BW	WW	YW	MILK	MCE	MWWT	STAY	DOC	CW	REA	MARB		API	TI
EPD	-1.0	+7.9	+89.3	+125.9	+32.8	-0.6	+77.4	+15.8	+10.4	23.3	0.99	-0.18	INDEX	89.98	68.76
Acc	0.4	0.46	0.4	0.4	0.07	0.16	0.18	0.25	0.35	0.33	0.32	0.29	%RK	75	75
%RK	100	95	5	10	15	100	3	25	40	35	10	85	%RK	75	75

NOTES: We have been eagerly awaiting the emergence of this young polled sire! Every way you look at him he has the look of one of the great ones! Strong headed with a wonderful hooded eye with depth, muscle and as easy doing as the come, he has everything needed in a stud sire. A pedigree full of the most influential sires we have bred complement this young sire. Top 3% for maternal weaning weight, top 5% for weaning, top 10% for yearling weight and top 15% for eye muscle.

PURCHASER: _____ PRICE: \$ _____

LOT 4 WOONALLEE KERRAH U178

BORN: 2/4/2023
 REG: WEEPU178
 EYE: 100/100
 COLOUR: Red
 HORN: Polled

- GLENSIDE CRUMPY C4

SIRE KERRAH G732

- KERRAH Z32

- WILLANDRA MARMADUKE

DAM WOONALLEE VASTI S092

- WOONALLEE VASTI K17

	CE	BW	WW	YW	MILK	MCE	MWWT	STAY	DOC	CW	REA	MARB		API	TI
EPD	+2.7	+8.2	+110.2	+155.0	+34.1	+1.5	+89.2	+12.6	+10.9	39.1	1.24	0.07	INDEX	109.7	88.37
Acc	0.41	0.45	0.41	0.4	0.09	0.17	0.2	0.27	0.33	0.33	0.31	0.29	%RK	20	20
%RK	85	95	1	1	10	85	1	70	35	3	1	10	%RK	20	20

NOTES: A high performing polled G732 son from a first calving heifer. A long-bodied bull with balance and style, he has all the cosmetics we like to see. If you are looking to add performance and growth, this is your bull. Top 1% for weaning, yearling, maternal weaning weight and eye muscle.

PURCHASER:

PRICE: \$

LOT 5 WOONALLEE RAFFLES U284

BORN: 11/4/2023
 REG: WEEPU284
 EYE: 100/100
 COLOUR: Dark Red
 HORN: Polled

- BANDEEKA POWER PACK

SIRE BANDEEKA RAFFLES

- BANDEEKA NEMMY N006

- MAGPIE PARK MASTER

DAM WOONALLEE ASHANTE Q223

- WOONALLEE ASHANTE L98

	CE	BW	WW	YW	MILK	MCE	MWWT	STAY	DOC	CW	REA	MARB		API	TI
EPD	-0.6	+7.2	+83.6	+125.5	+34.6	-0.9	+76.4	+14.1	+11.3	10.6	0.8	-0.17	INDEX	87.87	67.05
Acc	0.4	0.47	0.4	0.4	0.09	0.16	0.19	0.26	0.35	0.34	0.32	0.29	%RK	80	80
%RK	100	85	15	10	10	100	4	50	30	90	50	85	%RK	80	80

NOTES: A dark red panda eyed Raffles son with extra length, front end extension and style. Highly rated by everyone that has visited, it is no surprise he is one of the highest performing bulls on offer. Top 4% for maternal weaning weight, top 10% for yearling and 15% for weaning weight.

PURCHASER:

PRICE: \$

LOT 6 WOONALLEE SHAMROCK U206

BORN: 4/4/2023
 REG: WEEPU206
 EYE: 100/100
 COLOUR: Red
 HORN: Polled

- FSMB POL EDDY 3E

SIRE ROD SHAMROCK 10G

- BSM POL BRENDA 8C

- GLEN ANTHONY Y-ARTA AY02

DAM WOONALLEE VASTI M67

- WOONALLEE VASTI E11

	CE	BW	WW	YW	MILK	MCE	MWWT	STAY	DOC	CW	REA	MARB		API	TI
EPD	+0.8	+8.8	+81.7	+119.2	+33.0	+0.3	+73.9	+18.7	+14.5	17.3	0.64	-0.02	INDEX	102.86	67.6
Acc	0.41	0.48	0.43	0.43	0.11	0.19	0.22	0.29	0.34	0.35	0.32	0.31	%RK	35	35
%RK	100	100	20	15	10	95	10	4	10	65	90	30	%RK	35	35

NOTES: The first of the ROD Shamrock sons to sell and if you have followed our programme, you will know his dam Vasti M67 is the absolute pinnacle of our traditional females. An impressive outcross sire with great length, depth and muscling that is docile and easy doing. If you are looking to add something new, he is well worth looking at. Top 4% for stay, top 10% for milk and docility and top 15% for yearling weight.

PURCHASER:

PRICE: \$

LOT 7

WOONALLEE NOTICE U393

BORN: 28/4/2023
 REG: WEEPU393
 EYE: 70/50
 COLOUR: Red
 HORN: Polled

• SIBELLE DIRTY HARRY 25Z

SIRE WONALLEE NOTICE N141

• WOONALLEE JULANI J47

• WILLANDRA GOMEZ

DAM WONALLEE ROSY M159

• WOONALLEE ROSY E228

	CE	BW	WW	YW	MILK	MCE	MWWT	STAY	DOC	CW	REA	MARB		API	TI
EPD	+0.6	+8.2	+89.2	+126.3	+33.3	+0.1	+77.9	+13.6	+5.4	24.4	0.91	0.03	INDEX	98.66	73.91
Acc	0.41	0.47	0.43	0.43	0.15	0.21	0.24	0.28	0.4	0.35	0.33	0.34			
%RK	100	95	10	10	10	95	3	55	95	30	25	15	%RK	45	45

NOTES: A powerful Notice son with loads of muscle and capacity. Docile, slick skinned and super sound with an impeccable set of feet and legs, he has longevity built into this young sire. Top 10% for weaning weight, yearling weight, milk and top 15% for marbling.

PURCHASER:

PRICE: \$

LOT 8

WOONALLEE KERRAH U106

BORN: 28/3/2023
 REG: WEEPU106
 EYE: 100/90
 COLOUR: Red
 HORN: Polled

• GLENSIDE CRUMPY C4

SIRE KERRAH G732

• KERRAH Z32

• WOONALLEE NOTICE N141

DAM WONALLEE NONSENSE S364

• WOONALLEE NONSENSE M286

	CE	BW	WW	YW	MILK	MCE	MWWT	STAY	DOC	CW	REA	MARB		API	TI
EPD	+4.1	+7.0	+97.4	+140.9	+30.4	+2.7	+79.1	+13.1	+12.0	35.1	0.55	0.41	INDEX	127.49	89.43
Acc	0.4	0.44	0.39	0.38	0.09	0.16	0.19	0.25	0.32	0.32	0.3	0.29			
%RK	70	85	2	1	25	70	2	60	25	5	95	1	%RK	3	3

NOTES: A heifers first calf and what a powerful genetic package he is. Deep sided with length, thickness and softness he is an efficient young sire. Top 1% for yearling weight & marbling and top 2% for weaning & maternal weaning weight.

PURCHASER:

PRICE: \$

LOT 9

WOONALLEE SHAMROCK U003

BORN: 15/3/2023
 REG: WEEPU003
 EYE: 100/100
 COLOUR: Red
 HORN: Polled

• FSMB POL EDDY 3E

SIRE ROD SHAMROCK 10G

• BSM POL BRENDA 8C

• PHS BANK ROLL 345B

DAM WONALLEE FIREFLY M57

• WATERFRONT FIREFLY-F249

	CE	BW	WW	YW	MILK	MCE	MWWT	STAY	DOC	CW	REA	MARB		API	TI
EPD	+7.5	+3.7	+74.8	+105.9	+32.4	+2.9	+69.8	+16.5	+7.9	11.7	0.93	0.05	INDEX	117.75	73.39
Acc	0.42	0.48	0.41	0.41	0.1	0.2	0.2	0.29	0.35	0.35	0.33	0.32			
%RK	25	15	40	40	15	70	20	20	70	85	20	15	%RK	10	10

NOTES: Another ROD Shamrock son out of an outstanding female, M57. Incredible thickness, capacity and bone he is the one to add extra performance to your herd. Extremely quiet and easy keeping, he will be easy to find sale day. Top 10% for API & TI and top 15% for birth, milk and marbling.



PURCHASER:

PRICE: \$

LOT 10 WOONALLEE KIWI U333

BORN: 16/4/2023
 REG: WEEPU333
 EYE: 100/100
 COLOUR: Red
 HORN: Homo Polled

• KERRAH D859
SIRE WOONALLEE KIWI Q73
 • WOONALLEE DAISY N95

• WOONALLEE DIMENSION
DAM WOONALLEE POLLY J4
 • WOONALLEE POLLY F20

	CE	BW	WW	YW	MILK	MCE	MWWT	STAY	DOC	CW	REA	MARB		API	TI
EPD	+17.2	+1.6	+61.3	+93.2	+33.2	+10.1	+63.9	+16.4	+9.4	1.9	0.89	0.25	INDEX	140.41	74.16
Acc	0.4	0.47	0.41	0.41	0.12	0.17	0.22	0.26	0.34	0.33	0.32	0.31			
%RK	1	4	90	75	10	1	45	20	50	100	25	1	%RK	1	1

NOTES: A super docile Q73 son with the added bonus of being Homo polled. Deep flanked, soft and easy doing he is the perfect heifer bull that will still offer performance and style. Top 1% for calving ease, maternal calving ease, API & marbling and top 4% for birth.

PURCHASER: _____ PRICE: \$ _____



LOT 11 WOONALLEE NOTICE U367

BORN: 22/4/2023
 REG: WEEPU367
 EYE: 100/100
 COLOUR: Red
 HORN: Polled

• SIBELLE DIRTY HARRY 25Z
SIRE WOONALLEE NOTICE N141
 • WOONALLEE JULANI J47

• GK QUE SERA K17
DAM WOONALLEE CHARO M370
 • WOONALLEE CHARO J258

	CE	BW	WW	YW	MILK	MCE	MWWT	STAY	DOC	CW	REA	MARB		API	TI
EPD	+5.2	+3.9	+71.6	+93.1	+24.5	+1.8	+60.3	+19.2	+2.4	31.5	1.23	-0.12	INDEX	107.25	64.76
Acc	0.42	0.48	0.44	0.43	0.16	0.21	0.25	0.31	0.37	0.35	0.33	0.34			
%RK	55	20	55	75	65	85	65	3	100	10	1	70	%RK	25	25

NOTES: A typical Notice son with plenty of muscle and shape to him. Extremely sound with great feet and legs he looks to have longevity built in. Top 1% for eye muscle and top 3% for stay.

PURCHASER: _____ PRICE: \$ _____

LOT 12 WOONALLEE NOTICE U434

BORN: 12/5/2023
 REG: WEEPU434
 EYE: 100/100
 COLOUR: Red
 HORN: Homo Polled

• SIBELLE DIRTY HARRY 25Z
SIRE WOONALLEE NOTICE N141
 • WOONALLEE JULANI J47

• GLEN ANTHONY Y-ARTA AY02
DAM WOONALLEE KATHIE L125
 • WOONALLEE KATHIE B111

	CE	BW	WW	YW	MILK	MCE	MWWT	STAY	DOC	CW	REA	MARB		API	TI
EPD	+6.7	+3.7	+78.9	+114.6	+40.8	+2.1	+80.3	+20.5	+7.2	12.4	1.01	-0.01	INDEX	123.37	74.84
Acc	0.41	0.48	0.44	0.44	0.16	0.22	0.25	0.29	0.41	0.38	0.34	0.34			
%RK	35	15	25	20	1	80	2	1	80	85	10	30	%RK	4	4

NOTES: A high performing Homo polled Notice son out of one our very best cows Kathie L125. Deep sided with extra thickness and power, you can see the dominance of this cow family coming through. Top 1% for milk & stay, top 4% for API and top 15% for birth.

PURCHASER: _____ PRICE: \$ _____

LOT 13

WOONALLEE RAFFLES U278

BORN: 10/4/2023
 REG: WEEPU278
 EYE: 100/100
 COLOUR: Red
 HORN: Polled

• BANDEEKA POWER PACK

SIRE BANDEEKA RAFFLES

• BANDEEKA NEMMY N006

• WOONALLEE NOTICE N141

DAM WOONALLEE VASTI R242

• WOONALLEE VASTI M408

	CE	BW	WW	YW	MILK	MCE	MWWT	STAY	DOC	CW	REA	MARB		API	TI
EPD	-0.2	+8.0	+77.2	+109.6	+33.6	+0.3	+72.2	+15.9	+9.1	18.4	0.77	-0.07	INDEX	92.19	64.02
Acc	0.41	0.46	0.41	0.4	0.08	0.16	0.19	0.25	0.32	0.33	0.31	0.3			
%RK	100	95	30	30	10	95	15	25	55	60	60	50	%RK	70	70

NOTES: A long-bodied bull again by Raffles. A versatile bull that can be used in both a maternal and terminal application. Top 10% for milk & top 15% for fat.

PURCHASER:

PRICE: \$

LOT 14

WOONALLEE RAFFLES U414

BORN: 4/5/2023
 REG: WEEPU414
 EYE: 100/100
 COLOUR: Red
 HORN: Polled

• BANDEEKA POWER PACK

SIRE BANDEEKA RAFFLES

• BANDEEKA NEMMY N006

• BLUE DOG 21

DAM WOONALLEE RINA Q373

• WOONALLEE RINA G98

	CE	BW	WW	YW	MILK	MCE	MWWT	STAY	DOC	CW	REA	MARB		API	TI
EPD	-3.0	+8.3	+96.1	+140.5	+33.7	-1.7	+81.8	+13.5	+9.5	14.5	0.94	-0.13	INDEX	88.24	73.48
Acc	0.39	0.47	0.41	0.39	0.08	0.15	0.19	0.25	0.35	0.33	0.3	0.29			
%RK	100	95	2	2	10	100	1	55	50	75	20	70	%RK	80	80

NOTES: Extremely docile and easy doing bull on a sound, moderate frame. Strong headed and powerful he has a lot to offer. Top 2% weaning & yearling weight and top 10% for milk.

PURCHASER:

PRICE: \$

LOT 15

WOONALLEE RAFFLES U132

BORN: 30/3/2023
 REG: WEEPU132
 EYE: 100/100
 COLOUR: Red
 HORN: Polled

• BANDEEKA POWER PACK

SIRE BANDEEKA RAFFLES

• BANDEEKA NEMMY N006

• WILLANDRA MARMADUKE

DAM WOONALLEE PANSY R069

• WOONALLEE PANSY P238

	CE	BW	WW	YW	MILK	MCE	MWWT	STAY	DOC	CW	REA	MARB		API	TI
EPD	+1.3	+6.6	+87.2	+124.3	+30.6	+0.7	+74.2	+14.7	+13.1	13.5	0.82	-0.27	INDEX	87.4	67.1
Acc	0.4	0.47	0.41	0.4	0.07	0.15	0.18	0.25	0.32	0.33	0.3	0.28			
%RK	95	75	10	10	25	95	10	40	15	80	45	95	%RK	85	85

NOTES: A sound and well-balanced bull with all the cosmetics we like to see. Plenty of muscle and hind quarter out of a great young cow Pansy R69. Top 10% weaning and yearling weight.

PURCHASER:

PRICE: \$

LOT 16

WOONALLEE RAFFLES U315

BORN: 15/4/2023
 REG: WEEPU315
 EYE: 100/100
 COLOUR: Red
 HORN: Polled

• BANDEEKA POWER PACK

• WILLANDRA MARMADUKE

SIRE BANDEEKA RAFFLES

DAM WOONALLEE REGAL R188

• BANDEEKA NEMMY N006

• WOONALLEE REGAL P318

	CE	BW	WW	YW	MILK	MCE	MWWT	STAY	DOC	CW	REA	MARB		API	TI
EPD	-1.2	+7.7	+88.8	+128.0	+32.2	-1.9	+76.6	+16.6	+13.5	22.6	0.95	-0.18	INDEX	92.15	68.85
Acc	0.4	0.47	0.41	0.4	0.07	0.16	0.18	0.25	0.32	0.33	0.31	0.28			
%RK	100	95	10	10	15	100	4	20	15	40	15	85	%RK	70	70

NOTES: Another soft, long bodied Raffles son. Easy keeping and free moving, he has a skin type to suit the North. Top 10% for weaning & yearling and top 15% for eye muscle.

PURCHASER:

PRICE: \$

LOT 17

WOONALLEE KERRAH U60

BORN: 25/3/2023
 REG: WEEPU060
 EYE: 100/100
 COLOUR: Red
 HORN: Polled

• GLENSIDE CRUMPY C4

• WOONALLEE NOTICE N141

SIRE KERRAH G732

DAM WOONALLEE REGAL S372

• KERRAH Z32

• WOONALLEE REGAL P61

	CE	BW	WW	YW	MILK	MCE	MWWT	STAY	DOC	CW	REA	MARB		API	TI
EPD	+8.5	+3.0	+84.6	+123.7	+29.1	+6.6	+71.4	+15.2	+8.9	32.1	0.88	0.15	INDEX	126.78	81.88
Acc	0.4	0.45	0.41	0.4	0.09	0.17	0.2	0.26	0.33	0.33	0.31	0.3			
%RK	20	10	15	10	35	15	15	35	60	10	30	4	%RK	3	3

NOTES: A smooth muscled G732 out of a first calving heifer. Slick skinned and moderate he is an easy doing young bull with a strong maternal pedigree. Top 4% for marbling and top 10% for yearling and birth weight.



PURCHASER:

PRICE: \$

LOT 18

WOONALLEE KIWI U362

BORN: 21/4/2023
 REG: WEEPU362
 EYE: 100/100
 COLOUR: Red
 HORN: Polled

• KERRAH D859

• WOONALLEE LAS VEGAS

SIRE WOONALLEE KIWI Q73

DAM WOONALLEE POLLY P227

• WOONALLEE DAISY N95

• WOONALLEE POLLY C65

	CE	BW	WW	YW	MILK	MCE	MWWT	STAY	DOC	CW	REA	MARB		API	TI
EPD	+7.3	+6.5	+81.8	+114.9	+30.4	+4.5	+71.3	+12.3	+15.5	33.3	0.98	-0.15	INDEX	94.37	67.93
Acc	0.41	0.47	0.42	0.41	0.11	0.18	0.21	0.27	0.35	0.35	0.33	0.32			
%RK	30	70	20	20	25	40	15	75	5	10	15	80	%RK	60	60

NOTES: A super sound Q73 son with longevity built into his pedigree. Moderate framed easy doing he is an efficient free moving bull. Top 5% for docility and top 10% for carcase weight.

PURCHASER:

PRICE: \$

LOT 19

WOONALLEE NOTICE U396

BORN: 29/4/2023
 REG: WEEPU396
 EYE: 100/100
 COLOUR: Red
 HORN: Polled

• SIBELLE DIRTY HARRY 25Z

SIRE WONALLEE NOTICE N141

• WOONALLEE JULANI J47

• WOONALLEE BHR TORNADO

DAM WONALLEE REGAL J63

• WOONALLEE REGAL A6

	CE	BW	WW	YW	MILK	MCE	MWWT	STAY	DOC	CW	REA	MARB		API	TI
EPD	+2.0	+6.9	+91.4	+127.9	+41.6	+2.2	+87.3	+17.5	+2.7	24.7	1.11	0	INDEX	109.73	77.51
Acc	0.42	0.48	0.42	0.43	0.15	0.21	0.24	0.29	0.37	0.36	0.32	0.34	%RK	20	20
%RK	90	80	4	10	1	80	1	10	100	30	2	25			

NOTES: A high-quality Notice son out of a great old cow in Regal J63. Long and thick with huge muscling, he will add performance to your herd. Top 5% or better for 4 traits including top 1% for milk.

PURCHASER:

PRICE: \$

LOT 20

WOONALLEE RAFFLES U301

BORN: 13/4/2023
 REG: WEEPU301
 EYE: 100/100
 COLOUR: Light Red
 HORN: Polled

• BANDEEKA POWER PACK

SIRE BANDEEKA RAFFLES

• BANDEEKA NEMMY N006

• BLUE DOG 21

DAM WONALLEE JULANI Q269

• WOONALLEE JULANI J114

	CE	BW	WW	YW	MILK	MCE	MWWT	STAY	DOC	CW	REA	MARB		API	TI
EPD	-4.7	+9.8	+91.5	+129.1	+33.2	-3.1	+79.0	+13.0	+12.4	37.4	1.1	-0.01	INDEX	86.68	71.23
Acc	0.4	0.47	0.41	0.4	0.09	0.15	0.2	0.25	0.32	0.33	0.3	0.28	%RK	85	85
%RK	100	100	4	5	10	100	3	65	20	3	3	30			

NOTES: A larger framed Raffles son with extra length of body and super sound feet. Unfortunately sits at the bottom of the pecking order with his mates! Top 5% or better for 5 traits including top 3% for eye muscle.

PURCHASER:

PRICE: \$

LOT 21

WOONALLEE KIWI U350

BORN: 20/4/2023
 REG: WEEPU350
 EYE: 100/100
 COLOUR: Dark Red
 HORN: Polled

• KERRAH D859

SIRE WONALLEE KIWI Q73

• WOONALLEE DAISY N95

• WOONALLEE DIMENSION

DAM WONALLEE ASHANTE L32

• WOONALLEE ASHANTE J78

	CE	BW	WW	YW	MILK	MCE	MWWT	STAY	DOC	CW	REA	MARB		API	TI
EPD	+11.0	+2.4	+66.9	+105.8	+34.0	+6.7	+67.5	+14.0	+10.8	33.7	0.92	0.17	INDEX	124.3	73.64
Acc	0.41	0.46	0.41	0.41	0.1	0.17	0.2	0.26	0.34	0.34	0.32	0.31	%RK	3	3
%RK	10	10	75	40	10	10	30	50	35	10	20	3			

NOTES: A dark red goggled eyed Q73 son with strong maternal traits. Moderate framed and sound, he is one of the younger bulls in this section. Top 3% for marbling, API & TI and top 10% for calving ease & birth weight.



PURCHASER:

PRICE: \$

FALLS

Livestock Transport

FINLEY

Lockie Falls – 0429 826 342

www.fallslivestock.com.au | flt1@bigpond.com

*Specialist Stud Stock Transport
servicing all states Australia Wide*



Autumn Black Bulls

Lots 22 - 32



Lot 23 Woonallee Nobel Prize U347



Lot 82 Woonallee Honor U18



[VIEW ALL LOTS ONLINE](#)



Lot 79 Woonallee Guardian U88

LOT **22**

WOONALLEE RAWHIDE U266

BORN: 9/4/2023
 REG: WEEPU266
 EYE: 100/100
 COLOUR: Homo Black
 HORN: Homo Polled

• WOONALLEE LICORICE L006

• WOONALLEE NORWOOD

SIRE WOONALLEE RAWHIDE

DAM WOONALLEE SASSY R280

• WOONALLEE SASSY L372

• WOONALLEE SASSY P210

	CE	BW	WW	YW	MILK	MCE	MWWT	STAY	DOC	CW	REA	MARB		API	TI
EPD	+2.0	+7.5	+90.8	+139.1	+23.8	-0.8	+69.2	+15.5	+11.7	50.7	1.3	-0.19	INDEX	95.9	70.18
Acc	0.41	0.45	0.41	0.42	0.14	0.21	0.23	0.31	0.38	0.37	0.35	0.36			
%RK	100	100	10	10	30	100	15	50	65	3	2	95	%RK	95	95

NOTES: An impressive Rawhide son to lead off the Black draft of bulls. Slick skinned with tremendous length, depth and power, he ticks all the boxes. Top 10% for both weaning and yearling weights.

PURCHASER:

PRICE: \$

LOT **23**

WOONALLEE NOBEL PRIZE U347

BORN: 18/4/2023
 REG: WEEPU347
 EYE: 100/100
 COLOUR: Black
 HORN: Homo Polled

• WOONALLEE NOBEL PRIZE

• KWA LAW MAKER 59C

SIRE WOONALLEE NOBLE PRIZE Q368

DAM WOONALLEE MS SMARTY PANTS R558

• WOONALLEE M442

• MRL MISS SMARTY PANTS III

	CE	BW	WW	YW	MILK	MCE	MWWT	STAY	DOC	CW	REA	MARB		API	TI
EPD	+11.1	+2.9	+66.3	+110.7	+20.4	+4.8	+53.6	+14.0	+11.9	40	0.98	0.11	INDEX	120.48	69.77
Acc	0.43	0.48	0.45	0.46	0.14	0.21	0.24	0.31	0.38	0.38	0.35	0.35			
%RK	45	65	85	65	60	70	80	65	60	15	25	45	%RK	60	60

NOTES: A really smooth, deep sided and balanced bull that is super sound and correct. Sired by Nobel Prize Q368, he would make some magnificent females. Top 15% for Carcase Wgt.

PURCHASER:

PRICE: \$

LOT **24**

WOONALLEE RENDEZVOUS U134

BORN: 30/3/2023
 REG: WEE3U134
 EYE: 100/100
 COLOUR: Homo Black
 HORN: Homo Polled

• WOONALLEE NORWOOD

• WOONALLEE LICORICE L006

SIRE WOONALLEE RENDEVOUS

DAM WOONALLEE DAIQUIRI Q329

• WOONALLEE OLIVIA P154

• WOONALLEE DAIQUIRI M24

	CE	BW	WW	YW	MILK	MCE	MWWT	STAY	DOC	CW	REA	MARB		API	TI
EPD	+1.4	+8.5	+100.7	+145.9	+23.5	+1.0	+73.9	+15.1	+13.7	58.2	0.94	0.1	INDEX	109.51	80.31
Acc	0.42	0.48	0.44	0.45	0.13	0.19	0.23	0.3	0.36	0.37	0.34	0.34			
%RK	100	100	2	5	35	100	4	55	35	1	35	50	%RK	80	80

NOTES: A real carcase bull with power and performance. Docile and sound with bone and substance, he offers plenty. Top 1% Carcase Wgt.

PURCHASER:

PRICE: \$

LOT **25**

WOONALLEE MISSILE U377

BORN: 23/4/2023
 REG: WEEPU377
 EYE: 100/100
 COLOUR: Homo Black
 HORN: Homo Polled

• MRL MISSILE 138C

SIRE WONALLEE P393

• WEBB DEW IT RIGHT J0608

• BONNYDALE KNOXVILLE

DAM WONALLEE SIMPLY THE BEST K11

• WONALLEE SIMPLY THE BEST H206

	CE	BW	WW	YW	MILK	MCE	MWWT	STAY	DOC	CW	REA	MARB		API	TI
EPD	+8.8	+3.8	+78.3	+119.1	+25.3	+5.2	+64.5	+15.3	+10.9	32.3	1.07	0	INDEX	116.45	73.43
Acc	0.42	0.49	0.46	0.47	0.18	0.23	0.27	0.32	0.39	0.39	0.36	0.34			
%RK	70	80	50	45	20	65	30	50	75	40	15	70	%RK	70	70

NOTES: Tremendous depth and softness in this P393 son. A strong maternal pedigree with longevity and consistency. Top 15% for EMA.

PURCHASER:

PRICE: \$

LOT **26**

WOONALLEE RENDEZVOUS U320

BORN: 15/4/2023
 REG: WEE3U320
 EYE: 100/100
 COLOUR: Homo Black
 HORN: Homo Polled

• WONALLEE NORWOOD

SIRE WONALLEE RENDEVOUS

• WONALLEE OLIVIA P154

• WONALLEE MESSIAH

DAM WONALLEE ADA Q543

• WONALLEE ADA M306

	CE	BW	WW	YW	MILK	MCE	MWWT	STAY	DOC	CW	REA	MARB		API	TI
EPD	+8.9	+6.2	+93.6	+135.1	+24.3	+3.9	+71.1	+11.9	+15.3	41.3	0.95	0.24	INDEX	121.83	84.1
Acc	0.42	0.48	0.44	0.45	0.13	0.19	0.23	0.29	0.36	0.37	0.33	0.33			
%RK	70	100	10	15	30	80	10	85	15	15	30	25	%RK	60	60

NOTES: A larger framed bull with plenty of length, performance and growth. Would suit a self replacing herd. Top 10% for Weaning and Maternal weaning Wgt and top 15% for Yearling Wgt and Docility.

PURCHASER:

PRICE: \$

LOT **27**

WOONALLEE RESPECT U358

BORN: 20/4/2023
 REG: WEEPU358
 EYE: 100/100
 COLOUR: Homo Black
 HORN: Homo Polled

• MRL MISSILE 138C

SIRE WONALLEE RESPECT

• WEBB TANK J802 (3)

• HOBBS LIVESTOCK SPICE IT UP

DAM WONALLEE RAMONA Q204

• WEBB K138

	CE	BW	WW	YW	MILK	MCE	MWWT	STAY	DOC	CW	REA	MARB		API	TI
EPD	+4.9	+6.3	+89.8	+142.7	+22.4	+2.7	+67.3	+14.1	+10.9	56.8	1.36	0.04	INDEX	111.37	76.97
Acc	0.38	0.42	0.4	0.4	0.15	0.2	0.23	0.31	0.37	0.37	0.35	0.34			
%RK	95	100	15	10	45	90	20	65	75	1	1	60	%RK	80	80

NOTES: A strong headed sire with extra length and muscle wrapped up in a slick skin. Top 1% for EMA and Carcase Wgt.

PURCHASER:

PRICE: \$

LOT **28**

WOONALLEE GUARDIAN U176

BORN: 2/4/2023
 REG: WEE3U176
 EYE: 100/100
 COLOUR: Homo Black
 HORN: Homo Polled

• HOOK'S BEACON 56B

• LANCASTER NATURAL

SIRE **CLRS GUARDIAN 317G**

DAM **WOONALLEE S144**

• CLRS ALWAYS XCELLENT

• WOONALLEE UPGRADE N314

	CE	BW	WW	YW	MILK	MCE	MWWT	STAY	DOC	CW	REA	MARB		API	TI
EPD	+7.4	+2.2	+98.4	+151.5	+18.0	+1.3	+67.2	+16.3	+8.7	44.9	1.19	0.54	INDEX	156.23	99.24
Acc	0.48	0.51	0.49	0.48	0.23	0.3	0.32	0.36	0.47	0.44	0.42	0.42			
%RK	80	50	3	3	80	95	20	40	90	10	5	3	%RK	5	5

NOTES: An outcross power bull with huge capacity and volume. U176 has a lovely slick skin and good set of testicles. Top 5% or better for 6 traits including Weaning, Yearling and Marbling.

PURCHASER:

PRICE: \$

LOT **29**

WOONALLEE MISSILE U269

BORN: 10/4/2023
 REG: WEEPU269
 EYE: 100/100
 COLOUR: Homo Black
 HORN: Homo Polled

• MRL MISSILE 138C

• WOONALLEE LIEUTENANT

SIRE **WOONALLEE P393**

DAM **WOONALLEE SIMPLY THE BEST P235**

• WEBB DEW IT RIGHT J0608

• WOONALLEE SIMPLY THE BEST H210

	CE	BW	WW	YW	MILK	MCE	MWWT	STAY	DOC	CW	REA	MARB		API	TI
EPD	+15.3	-0.8	+51.9	+75.1	+20.1	+7.8	+46.1	+17.7	+12.6	12.8	0.72	0.03	INDEX	127.1	63.2
Acc	0.43	0.49	0.46	0.46	0.18	0.23	0.27	0.3	0.4	0.38	0.35	0.35			
%RK	10	10	100	100	65	20	100	25	50	95	70	65	%RK	45	45

NOTES: A great calving ease option here with tremendous softness and depth. Easy doing and out of a strong and predictable cow family. Top 10% for Calving Ease and Birth Wgt.



PURCHASER:

PRICE: \$

LOT **30**

WOONALLEE HONOR U013

BORN: 20/3/2023
 REG: WEE3U013
 EYE: 100/100
 COLOUR: Homo Black
 HORN: Homo Polled

• HOOK'S BEACON 56B

• WOONALLEE P393

SIRE **KBHR HONOR H060**

DAM **WOONALLEE RACHEAL S337**

• WS MISS SUGAR C4

• WOONALLEE N44

	CE	BW	WW	YW	MILK	MCE	MWWT	STAY	DOC	CW	REA	MARB		API	TI
EPD	+20.7	-2.7	+73.8	+112.0	+27.9	+11.4	+64.8	+21.3	+10.3	33.9	0.85	0.52	INDEX	180.55	91.99
Acc	0.47	0.51	0.48	0.49	0.2	0.26	0.29	0.34	0.42	0.43	0.4	0.4			
%RK	1	2	65	65	10	1	25	3	80	35	50	3	%RK	1	1

NOTES: A moderate framed Honor son with plenty of carcase and thickness. An elite calving ease option without sacrificing performance. Top 1% for Calving Ease, Maternal Calving Ease and API.



PURCHASER:

PRICE: \$

LOT 31

WOONALLEE HONOR U050

BORN: 24/3/2023
 REG: WEEPU050
 EYE: 100/100
 COLOUR: Black
 HORN: Polled

• HOOK'S BEACON 56B

SIRE KBHR HONOR H060

• WS MISS SUGAR C4

• LFE BLACK LAKOTA 385W

DAM WOONALLEE KEEPSAKE K87

• WOONALLEE KEEPSAKE H42

	CE	BW	WW	YW	MILK	MCE	MWWT	STAY	DOC	CW	REA	MARB		API	TI
EPD	+12.3	+0.8	+74.8	+117.3	+23.0	+7.8	+60.4	+19.4	+9.6	20.3	0.72	0.46	INDEX	157.66	86.06
Acc	0.43	0.46	0.44	0.44	0.21	0.25	0.29	0.34	0.42	0.4	0.39	0.38			
%RK	30	30	60	50	35	20	50	10	85	80	70	5	%RK	4	4

NOTES: Very similar to the previous Honor son with a little more capacity and style. Backed by the great Keepsake line, he has longevity built in. Top 4% for API & TI and top 5% for marbling.

PURCHASER:

PRICE: \$

LOT 32

WOONALLEE RENDEZVOUS U257

BORN: 9/4/2023
 REG: WEEPU257
 EYE: 100/100
 COLOUR: Black
 HORN: Polled

• WOONALLEE NORWOOD

SIRE WOONALLEE RENDEVOUS

• WOONALLEE OLIVIA P154

• CCLT ALLIANCE 91C

DAM WOONALLEE RAMONA Q69

• CROSSROAD RAMONA 375R

	CE	BW	WW	YW	MILK	MCE	MWWT	STAY	DOC	CW	REA	MARB		API	TI
EPD	+7.6	+4.8	+85.0	+113.7	+20.4	+1.0	+62.9	+12.7	+14.9	22.9	0.94	-0.05	INDEX	104.7	73.27
Acc	0.43	0.49	0.45	0.46	0.16	0.22	0.26	0.31	0.38	0.39	0.37	0.35			
%RK	80	90	25	60	60	100	35	80	20	75	35	80	%RK	90	90

NOTES: A well-balanced bull with strong carcass traits. Sound made and well structured with an outcross pedigree. Top 20% for Docility.

PURCHASER:

PRICE: \$



AROUND THE FARM IN 2024



LOT **33**

WOONALLEE S.K.W. U514

BORN: 28/8/2023
 REG: WEEPU514
 EYE: 100/100
 COLOUR: Black
 HORN: Homo Polled

• MADER WALK THIS WAY 224B

SIRE WONALLEE S.K.W.

• WOMBRAMURRA L045

• MRL MISSILE 138C

DAM WONALLEE Q428

• WOONALLEE CHARO H253

	CE	BW	WW	YW	MILK	MCE	MWWT	STAY	DOC	CW	REA	MARB		API	TI
EPD	+5.9	+3.9	+90.3	+133.4	+28.0	+4.4	+73.2	+15.7	+12.8	33.9	0.95	-0.1	INDEX	110.98	76.98
Acc	0.42	0.47	0.43	0.42	0.15	0.22	0.24	0.31	0.17	0.36	0.34	0.32			
%RK	90	80	15	20	10	75	4	50	50	35	30	90	%RK	80	80

NOTES: The first of the S.K.W. sons to sell and he will stand out come sale day. An elite herd sire prospect with all the bells and whistles!! His dam Q428 was the Grand Champion Female at the Royal Adelaide Show in 2022 and is one of our best young black cows. Top 10% for Milk and 15% for Weaning Wgt.

PURCHASER:

PRICE: \$

LOT **34**

WOONALLEE SHOWSTOPPER U553

BORN: 3/9/2023
 REG: WEEPU553
 EYE: 100/100
 COLOUR: Black
 HORN: Homo Polled

• BONNYDALE NUKARA

SIRE WONALLEE SHOW STOPPER

• WOONALLEE SIMPLY THE BEST Q109

• WOONALLEE P393

DAM WONALLEE CHARO R730

• WOONALLEE CHARO M386

	CE	BW	WW	YW	MILK	MCE	MWWT	STAY	DOC	CW	REA	MARB		API	TI
EPD	+11.8	+2.3	+92.5	+137.5	+22.6	+8.3	+68.9	+19.3	+12.4	41.5	1	0.15	INDEX	143.07	86.53
Acc	0.41	0.48	0.43	0.42	0.12	0.2	0.22	0.29	0.36	0.36	0.33	0.33			
%RK	35	50	10	15	40	15	15	15	55	15	25	40	%RK	20	20

NOTES: From the same cow family as the previous lot, it comes as no surprise the quality here. Huge performance and power in this strong headed young sire. Free moving, slick skinned and tidy underneath, he is complete. Top 15% or better for 8 traits.

PURCHASER:

PRICE: \$

LOT **35**

WOONALLEE SHOWSTOPPER U599

BORN: 9/9/2023
 REG: WEEPU599
 EYE: 100/100
 COLOUR: Homo Black
 HORN: Homo Polled

• BONNYDALE NUKARA

SIRE WONALLEE SHOW STOPPER

• WOONALLEE SIMPLY THE BEST Q109

• WOONALLEE NOBEL PRIZE

DAM WONALLEE R647

• WOONALLEE DEW IT RIGHT P397

	CE	BW	WW	YW	MILK	MCE	MWWT	STAY	DOC	CW	REA	MARB		API	TI
EPD	+16.0	+0.8	+88.8	+132.5	+16.3	+8.8	+60.7	+13.9	+11.0	31.4	1.16	-0.13	INDEX	124.51	80.01
Acc	0.43	0.49	0.45	0.44	0.14	0.21	0.24	0.3	0.37	0.38	0.35	0.35			
%RK	10	30	15	20	90	10	50	70	75	40	10	90	%RK	55	55

NOTES: Wide based, thick topped, with sound feet and legs, this Showstopper son is a real carcass bull. Top 10% for Calving Ease, Maternal Calving Ease and Eye Muscle.



PURCHASER:

PRICE: \$

LOT 36

WOONALLEE HONOR U505

BORN: 25/8/2023
 REG: WEE3U505
 EYE: 100/100
 COLOUR: Homo Black
 HORN: Homo Polled

• HOOK'S BEACON 56B

• GIBBS 2654Z BULLET PROOF

SIRE KBHR HONOR H060

DAM GIBBS 7077E LOUISE Y534

• WS MISS SUGAR C4

• SSF BLK LOUISE Y534

	CE	BW	WW	YW	MILK	MCE	MWWT	STAY	DOC	CW	REA	MARB		API	TI
EPD	+16.1	-0.8	+88.4	+151.3	+35.5	+10.1	+79.7	+23.7	+7.7	46.7	0.81	0.33	INDEX	174.66	95.06
Acc	0.44	0.47	0.48	0.48	0.23	0.28	0.31	0.36	0.45	0.43	0.41	0.43			
%RK	10	10	15	3	1	3	1	1	95	10	55	15	%RK	1	1

NOTES: An elite outcross sire out of the great 7077E cow from the Gibbs herd in America. We have retained two full brothers for stud duty and this long bodied, power bull has plenty of potential. Top 10% or better for 11 traits!!



PURCHASER:

PRICE: \$

LOT 37

WOONALLEE SHOWSTOPPER U693

BORN: 26/9/2023
 REG: WEEPU693
 EYE: 100/100
 COLOUR: Black
 HORN: Homo Polled

• BONNYDALE NUKARA

• MRL MISSILE 138C

SIRE WOONALLEE SHOW STOPPER

DAM WOONALLEE CHARO P371

• WOONALLEE SIMPLY THE BEST Q109

• WOONALLEE CHARO J285

	CE	BW	WW	YW	MILK	MCE	MWWT	STAY	DOC	CW	REA	MARB		API	TI
EPD	+13.2	-1.8	+79.4	+112.9	+17.1	+7.6	+56.8	+17.9	+14.0	25.1	0.95	-0.06	INDEX	132.39	78.18
Acc	0.43	0.49	0.45	0.44	0.15	0.21	0.25	0.3	0.37	0.35	0.34	0.34			
%RK	25	4	45	60	85	25	70	25	30	65	30	80	%RK	35	35

NOTES: Another Showstopper son and once again super sound and docile. Slick skinned and easy keeping, he is a safe calving ease option. Top 4% Birth Wgt.



PURCHASER:

PRICE: \$

LOT 38

WOONALLEE MISSILE U639

BORN: 13/9/2023
 REG: WEE3U639
 EYE: 100/100
 COLOUR: Homo Black
 HORN: Homo Polled

• MRL MISSILE 138C

• TNT TANKER U263

SIRE WOONALLEE P393

DAM WEBB TANK J802 (3)

• WEBB DEW IT RIGHT J0608

• WEBB EDITH E061

	CE	BW	WW	YW	MILK	MCE	MWWT	STAY	DOC	CW	REA	MARB		API	TI
EPD	+8.5	+1.4	+77.9	+117.0	+25.1	+4.6	+64.1	+18.2	+12.2	33	1.17	0.09	INDEX	129.69	77.47
Acc	0.43	0.5	0.46	0.45	0.19	0.24	0.28	0.33	0.4	0.38	0.36	0.36			
%RK	70	35	50	50	20	70	30	20	55	35	10	50	%RK	40	40

NOTES: A really docile, slick skinned bull with great softness and depth. Sound made with balance and style. Top 10% Eye Muscle and Top 15% for Fat.

PURCHASER:


PRICE: \$

SPANLIFT


South Australia's
Ag Shed Specialists



Visit us at the
Spanlift stand today!

 talk to us today

 www.spanlift.com.au

 1300 234 321

LOT **39**

WOONALLEE SHOWSTOPPER U587

BORN: 7/9/2023
 REG: WEEPU587
 EYE: 100/100
 COLOUR: Homo Black
 HORN: Homo Polled

- BONNYDALE NUKARA

- CCR COWBOY CUT 5048Z

SIRE **WOONALLEE SHOW STOPPER**

DAM **WOMBRAMURRA P162**

- WOONALLEE SIMPLY THE BEST Q109

- WOMBRAMURRA F286

	CE	BW	WW	YW	MILK	MCE	MWWT	STAY	DOC	CW	REA	MARB		API	TI
EPD	+15.4	+1.4	+92.4	+140.2	+19.0	+10.1	+65.2	+17.0	+12.6	29.9	0.99	0.09	INDEX	142.29	86.81
Acc	0.43	0.48	0.44	0.44	0.15	0.22	0.25	0.32	0.38	0.37	0.36	0.35	%RK	20	20
%RK	10	35	10	10	70	3	25	35	50	45	25	50			

NOTES: A smooth made Showstopper son with tremendous docility and large testicle development. Top 10% for Calving Ease, Weaning Wgt and Yearling Wgt.



PURCHASER:

PRICE: \$

LOT **40**

WOONALLEE SHOWSTOPPER U612

BORN: 10/9/2023
 REG: WEEPU612
 EYE: 100/100
 COLOUR: Black
 HORN: Homo Polled

- BONNYDALE NUKARA

- WOONALLEE MESSIAH

SIRE **WOONALLEE SHOW STOPPER**

DAM **WOONALLEE DEW IT RIGHT R740**

- WOONALLEE SIMPLY THE BEST Q109

- WOONALLEE DEW IT RIGHT L165

	CE	BW	WW	YW	MILK	MCE	MWWT	STAY	DOC	CW	REA	MARB		API	TI
EPD	+16.0	+0.4	+83.5	+127.0	+15.9	+9.7	+57.7	+17.1	+10.5	37.6	1.05	0.13	INDEX	143.91	83.47
Acc	0.42	0.48	0.44	0.43	0.14	0.21	0.24	0.31	0.37	0.36	0.35	0.33	%RK	15	15
%RK	10	25	30	30	90	4	65	30	80	20	15	40			

NOTES: Yet again another outstanding Showstopper son exhibiting the carcass traits and docility he is becoming renowned for. Deep bodied and free moving out of an outstanding young cow. Top 4% Maternal Calving Ease and Top 10% for Calving Ease.



PURCHASER:

PRICE: \$

LOT **41**

WOONALLEE GLOBAL U500

BORN: 25/8/2023
 REG: WEEPU500
 EYE: 100/100
 COLOUR: Homo Black
 HORN: Homo Polled

- WS PROCLAMATION E202

- WOONALLEE NOBEL PRIZE

SIRE **KBHR GLOBAL J138**

DAM **WOONALLEE PEAR S540**

- BAR CK MS X38 106Z

- WOONALLEE PEAR N378

	CE	BW	WW	YW	MILK	MCE	MWWT	STAY	DOC	CW	REA	MARB		API	TI
EPD	+14.7	+1.2	+77.2	+124.5	+21.6	+8.9	+60.2	+19.8	+15.0	17.8	0.52	0.52	INDEX	165.88	88.83
Acc	0.43	0.46	0.45	0.45	0.17	0.23	0.26	0.34	0.42	0.39	0.37	0.38	%RK	2	2
%RK	15	35	50	35	50	10	50	10	20	85	95	3			

NOTES: The first Global son to sell in Australia, he has an outstanding pedigree going back to the great Pear E59. A long bodied, easy doing larger framed bull that could handle stud duties. Top 2% API and Top 3% for Marbling.



PURCHASER:

PRICE: \$

LOT **42**

WOONALLEE MISSILE U593

BORN: 7/9/2023
 REG: WEEPU593
 EYE: 100/100
 COLOUR: Homo Black
 HORN: Homo Polled

• MRL MISSILE 138C

SIRE WOODALLEE P393

• WEBB DEW IT RIGHT J0608

• WOMBRAMURRA HUMMER E038

DAM WOMBRAMURRA H205

• WOMBRAMURRA D056

	CE	BW	WW	YW	MILK	MCE	MWWT	STAY	DOC	CW	REA	MARB		API	TI
EPD	+17.6	+1.5	+71.7	+107.4	+23.7	+8.9	+59.6	+20.4	+11.7	15.1	0.55	0.25	INDEX	151.83	78.64
Acc	0.44	0.49	0.45	0.44	0.19	0.24	0.28	0.31	0.4	0.38	0.36	0.37	%RK	10	10
%RK	3	40	70	75	30	10	55	5	65	90	90	25			

NOTES: An elite calving ease young bull here out of a productive old Wombramura cow. Super sound, smooth fronted with a slick skin. Top 3% Calving Ease and Top 5% for Stay.

PURCHASER:

PRICE: \$

LOT **43**

WOONALLEE S.K.W. U629

BORN: 12/9/2023
 REG: WEEPU629
 EYE: 100/100
 COLOUR: Homo Black
 HORN: Homo Polled

• MADER WALK THIS WAY 224B

SIRE WOODALLEE S.K.W.

• WOMBRAMURRA L045

• HOOK'S BEACON 56B

DAM WOMBRAMURRA P201

• WOONALLEE HAYLEY L153

	CE	BW	WW	YW	MILK	MCE	MWWT	STAY	DOC	CW	REA	MARB		API	TI
EPD	+4.6	+3.8	+93.5	+144.1	+26.6	+4.2	+73.4	+21.1	+12.2	47.7	1.16	0.29	INDEX	144.62	89.08
Acc	0.43	0.47	0.44	0.42	0.16	0.22	0.25	0.32	0.17	0.38	0.35	0.35	%RK	15	15
%RK	95	80	10	10	15	75	4	3	55	5	10	20			

NOTES: A rugged, power bull with ample bone and muscle. A proven and predictable outcross pedigree makes this bull even more attractive. Balanced data with 9 traits 15% or better including 3% for stay.

PURCHASER:

PRICE: \$

LOT **44**

WOONALLEE MESSIAH U510

BORN: 27/8/2023
 REG: WEE3U510
 EYE: 100/100
 COLOUR: Homo Black
 HORN: Homo Polled

• WOONALLEE MESSIAH

SIRE WOODALLEE Q085

• WEBB TANK J670

• WELSHS DEW IT RIGHT 067T

DAM WEBB DEW IT RIGHT J0697 (

• WEBB INDIAN RIVER G641

	CE	BW	WW	YW	MILK	MCE	MWWT	STAY	DOC	CW	REA	MARB		API	TI
EPD	+13.0	+2.9	+82.8	+133.9	+21.5	+8.1	+62.9	+13.8	+14.1	47.5	1.28	0.15	INDEX	132.36	82.11
Acc	0.43	0.48	0.45	0.44	0.15	0.21	0.25	0.31	0.37	0.38	0.36	0.35	%RK	35	35
%RK	25	65	30	20	50	20	35	70	30	5	2	40			

NOTES: A larger framed, clean fronted bull with added length and balance. Dam is a functional, honest cow that never misses. Top 2% for eye muscle and top 5% for carcase weight.

PURCHASER:

PRICE: \$

LOT 45 WOONALLEE S.K.W. U626

BORN: 12/9/2023
 REG: WEEPU626
 EYE: 100/100
 COLOUR: Homo Black
 HORN: Homo Polled

• MADER WALK THIS WAY 224B

• BONNYDALE AUGUSTUS L84

SIRE WOONALLEE S.K.W.

DAM WOMBRAMURRA N058

• WOMBRAMURRA L045

• WOMBRAMURRA J188

	CE	BW	WW	YW	MILK	MCE	MWWT	STAY	DOC	CW	REA	MARB		API	TI
EPD	+7.3	+3.9	+84.0	+128.7	+21.8	+2.5	+63.8	+19.3	+10.1	25.1	0.83	0.06	INDEX	127.2	77.25
Acc	0.42	0.47	0.44	0.42	0.14	0.21	0.24	0.32	0.16	0.38	0.36	0.34			
%RK	80	80	30	25	50	90	30	15	85	65	55	55	%RK	45	45

NOTES: An easy doing S.K.W. son with added muscle and fleshing. Well balanced with a fine coat, he will add extra performance to his progeny. Top 15% for stay.

PURCHASER:

PRICE: \$

LOT 46 WOONALLEE SHOWSTOPPER U545

BORN: 1/9/2023
 REG: WEEPU545
 EYE: 100/100
 COLOUR: Black
 HORN: Homo Polled

• BONNYDALE NUKARA

• MADER WALK THIS WAY 224B

SIRE WOONALLEE SHOW STOPPER

DAM WOONALLEE SCARLET S468

• WOONALLEE SIMPLY THE BEST Q109

• WOMBRAMURRA G172

	CE	BW	WW	YW	MILK	MCE	MWWT	STAY	DOC	CW	REA	MARB		API	TI
EPD	+15.1	+0.6	+89.2	+140.4	+20.7	+9.9	+65.3	+17.3	+12.6	32.7	0.79	0.16	INDEX	147.29	87.91
Acc	0.43	0.48	0.45	0.45	0.15	0.22	0.25	0.3	0.37	0.37	0.34	0.33			
%RK	10	25	15	10	60	4	25	30	50	35	60	35	%RK	15	15

NOTES: An impressive young sire out of a first calving heifer who was part of the 2022 Show team. Well structured with loose skin, he will end up being a larger framed bull. Top 15% or better for 6 traits.



PURCHASER:

PRICE: \$

LOT 47 WOONALLEE GLOBAL U531

BORN: 30/8/2023
 REG: WEE3U531
 EYE: 100/100
 COLOUR: Homo Black
 HORN: Homo Polled

• WS PROCLAMATION E202

• MADER WALK THIS WAY 224B

SIRE KBHR GLOBAL J138

DAM WOONALLEE DEW IT RIGHT S516

• BAR CK MS X38 106Z

• WEBB DEW IT RIGHT J0615

	CE	BW	WW	YW	MILK	MCE	MWWT	STAY	DOC	CW	REA	MARB		API	TI
EPD	+14.8	+0.0	+84.3	+130.6	+26.3	+9.9	+68.5	+16.7	+16.2	26.4	0.66	0.41	INDEX	157.68	91.8
Acc	0.46	0.5	0.47	0.47	0.17	0.24	0.27	0.33	0.42	0.41	0.4	0.39			
%RK	15	20	25	25	15	4	15	35	10	60	80	10	%RK	4	4

NOTES: Another Global son out of a first calving heifer that has ample softness and doing ability. Great calving ease option with sound feet and legs. Strong data set combining Calving Ease, Marbling and Docility.



PURCHASER:

PRICE: \$

LOT **48**

WOONALLEE S.K.W. U666

BORN: 19/9/2023
 REG: WEEPU666
 EYE: 100/100
 COLOUR: Black
 HORN: Homo Polled

• MADER WALK THIS WAY 224B

SIRE WONALLEE S.K.W.

• WOMBRAMURRA L045

• WOONALLEE P393

DAM WONALLEE UPGRADE R698

• WOONALLEE UPGRADE M249

	CE	BW	WW	YW	MILK	MCE	MWWT	STAY	DOC	CW	REA	MARB		API	TI
EPD	+9.0	+4.2	+91.0	+134.3	+24.7	+7.0	+70.2	+21.6	+11.6	30.2	1.04	0.03	INDEX	134.21	80.93
Acc	0.42	0.48	0.44	0.44	0.14	0.2	0.24	0.3	0.19	0.35	0.35	0.32			
%RK	65	85	10	15	25	35	10	2	65	45	20	65	%RK	30	30

NOTES: Huge capacity and volume in this S.K.W. son. A rugged carcase bull that will add quality to your herd. Top 2% for Stay.

PURCHASER:

PRICE: \$

LOT **49**

WOONALLEE MISSILE U722

BORN: 17/10/2023
 REG: WEEPU722
 EYE: 100/100
 COLOUR: Homo Black
 HORN: Homo Polled

• MRL MISSILE 138C

SIRE WONALLEE P393

• WEBB DEW IT RIGHT J0608

• WOMBRAMURRA MANIFEST

DAM WOMBRAMURRA L045

• WOMBRAMURRA J227

	CE	BW	WW	YW	MILK	MCE	MWWT	STAY	DOC	CW	REA	MARB		API	TI
EPD	+9.6	+3.5	+73.3	+108.7	+26.1	+4.6	+62.8	+21.9	+14.4	21.5	0.55	0.13	INDEX	134.38	72.89
Acc	0.43	0.49	0.45	0.44	0.18	0.23	0.27	0.32	0.39	0.38	0.35	0.35			
%RK	60	75	65	70	15	70	35	2	25	80	90	40	%RK	30	30

NOTES: The youngest bull on offer today and what an opportunity to purchase a half brother to S.K.W. His dam L45 has done it again producing this incredibly sound and complete young sire. Top 2% for Stay.

PURCHASER:

PRICE: \$

LOT **50**

WOONALLEE SHOWSTOPPER U554

BORN: 3/9/2023
 REG: WEEPU554
 EYE: 100/100
 COLOUR: Black
 HORN: Homo Polled

• BONNYDALE NUKARA

SIRE WONALLEE SHOW STOPPER

• WOONALLEE SIMPLY THE BEST Q109

• MRL MISSILE 138C

DAM WONALLEE CAPTAIN P389

• WEBB CAPTAIN H0908

	CE	BW	WW	YW	MILK	MCE	MWWT	STAY	DOC	CW	REA	MARB		API	TI
EPD	+10.2	+1.7	+82.4	+121.0	+19.7	+4.1	+60.9	+11.5	+12.7	45.1	0.98	-0.02	INDEX	112.98	76.45
Acc	0.42	0.48	0.44	0.43	0.14	0.21	0.24	0.3	0.36	0.36	0.34	0.34			
%RK	55	40	35	40	65	80	45	85	50	10	25	75	%RK	75	75

NOTES: A big upstanding bull with presence and style. Softness, depth and capacity complete this young bull. Top 10% for Carcase Wgt.

PURCHASER:

PRICE: \$

LOT 51

WOONALLEE S.K.W. U635

BORN: 12/9/2023
 REG: WEEPU635
 EYE: 100/100
 COLOUR: Black
 HORN: Homo Polled

• MADER WALK THIS WAY 224B

• BONNYDALE BLACK HAWK H274

SIRE WOONALLEE S.K.W.

DAM WOMBRAMURRA N042

• WOMBRAMURRA L045

• LANCASTER MATERNAL J125

	CE	BW	WW	YW	MILK	MCE	MWWT	STAY	DOC	CW	REA	MARB		API	TI
EPD	+8.1	+3.6	+85.6	+132.1	+27.4	+6.1	+70.2	+18.7	+14.6	29	1.04	0.06	INDEX	129.04	79.8
Acc	0.42	0.47	0.43	0.42	0.15	0.2	0.24	0.31	0.16	0.36	0.36	0.32			
%RK	75	75	25	20	10	50	10	15	25	50	20	55	%RK	45	45

NOTES: A clean fronted, long spined bull with very sound foot structure. An outcross pedigree on the maternal side offers something different to many. Top 10% for Milk and Maternal Weaning Wgt.

PURCHASER:

PRICE: \$

LOT 52

WOONALLEE MISSILE U628

BORN: 12/9/2023
 REG: WEEPU628
 EYE: 100/100
 COLOUR: Homo Black
 HORN: Homo Polled

• MRL MISSILE 138C

• WOMBRAMURRA MANIFEST

SIRE WOONALLEE P393

DAM WOMBRAMURRA K235

• WEBB DEW IT RIGHT J0608

• WOMBRAMURRA E202

	CE	BW	WW	YW	MILK	MCE	MWWT	STAY	DOC	CW	REA	MARB		API	TI
EPD	+7.5	+5.2	+82.0	+126.8	+23.0	+3.5	+64.0	+14.2	+14.7	35	0.83	-0.06	INDEX	107.26	71.25
Acc	0.43	0.5	0.46	0.45	0.18	0.23	0.27	0.31	0.4	0.37	0.35	0.37			
%RK	80	95	35	30	35	85	30	65	25	30	55	80	%RK	85	85

NOTES: Another P393 son with tremendous length and style. Sound footed and well made, he would suit a self replacing female operation. Top 25% for Yearling Wgt and Carcase Wgt.

PURCHASER:

PRICE: \$

LOT 53

WOONALLEE SHOWSTOPPER U680

BORN: 23/9/2023
 REG: WEEPU680
 EYE: 100/100
 COLOUR: Homo Black
 HORN: Homo Polled

• BONNYDALE NUKARA

• WOONALLEE LORENZO

SIRE WOONALLEE SHOW STOPPER

DAM WOMBRAMURRA Q163

• WOONALLEE SIMPLY THE BEST Q109

• WOMBRAMURRA H207

	CE	BW	WW	YW	MILK	MCE	MWWT	STAY	DOC	CW	REA	MARB		API	TI
EPD	+10.6	+2.2	+83.8	+122.9	+15.7	+6.4	+57.6	+13.3	+10.7	24.2	1.09	0.02	INDEX	119.85	78.29
Acc	0.42	0.48	0.43	0.42	0.13	0.21	0.23	0.3	0.35	0.34	0.33	0.32			
%RK	50	50	30	35	90	40	65	75	80	70	15	65	%RK	65	65

NOTES: Impeccable structure in this Showstopper son with outlook and presence. Top 15% for eye muscle.

PURCHASER:

PRICE: \$

LOT **54**

WOONALLEE SHOWSTOPPER U596

BORN: 8/9/2023
 REG: WEEPU596
 EYE: 100/100
 COLOUR: Black
 HORN: Homo Polled

• BONNYDALE NUKARA

SIRE WONALLEE SHOW STOPPER

• WOONALLEE SIMPLY THE BEST Q109

• NLC GEN TEN 82E

DAM WONALLEE CAPTAIN R622

• WOONALLEE CAPTAIN M343

	CE	BW	WW	YW	MILK	MCE	MWWT	STAY	DOC	CW	REA	MARB		API	TI
EPD	+9.5	+3.8	+83.3	+122.1	+22.1	+7.1	+63.8	+16.8	+9.4	29.5	1.04	-0.07	INDEX	116.78	73.76
Acc	0.42	0.48	0.45	0.44	0.13	0.2	0.24	0.29	0.36	0.35	0.33	0.32			
%RK	60	80	30	40	45	30	30	35	90	50	20	85	%RK	70	70

NOTES: A loose skinned, fine coated Showstopper son with a big sound foot under him. Well endowed in the working department, he ticks all the boxes! Top 20% for Eye Muscle.

PURCHASER:

PRICE: \$

LOT **55**

WOONALLEE RAWHIDE U687

BORN: 25/9/2023
 REG: WEEPU687
 EYE: 100/100
 COLOUR: Homo Black
 HORN: Homo Polled

• WOONALLEE LICORICE L006

SIRE WONALLEE RAWHIDE

• WOONALLEE SASSY L372

• BONNYDALE AUGUSTUS L84

DAM WOMBRAMURRA P310

• WOMBRAMURRA J087

	CE	BW	WW	YW	MILK	MCE	MWWT	STAY	DOC	CW	REA	MARB		API	TI
EPD	+3.9	+5.5	+95.7	+145.3	+18.0	+0.9	+65.9	+17.7	+14.5	42.8	0.99	-0.07	INDEX	114.48	78.09
Acc	0.42	0.49	0.44	0.43	0.14	0.2	0.24	0.3	0.37	0.36	0.35	0.35			
%RK	100	95	4	5	80	100	25	25	25	10	25	85	%RK	75	75

NOTES: A free moving sire with soft supple skin. Plenty of length and thickness to complete this Rawhide son. Top 4% for weaning weight and top 10% for carcase weight.

PURCHASER:

PRICE: \$

LOT **56**

WOONALLEE MISSILE U608

BORN: 10/9/2023
 REG: WEEPU608
 EYE: 100/100
 COLOUR: Homo Black
 HORN: Homo Polled

• MRL MISSILE 138C

SIRE WONALLEE P393

• WEBB DEW IT RIGHT J0608

• BONNYDALE AUGUSTUS L84

DAM WOMBRAMURRA N013

• LANGTON-GATE A081

	CE	BW	WW	YW	MILK	MCE	MWWT	STAY	DOC	CW	REA	MARB		API	TI
EPD	+12.7	+0.1	+76.3	+110.6	+24.1	+5.5	+62.3	+17.8	+14.6	25.8	0.64	0.17	INDEX	139.35	80.1
Acc	0.43	0.49	0.45	0.45	0.18	0.24	0.27	0.32	0.4	0.39	0.36	0.36			
%RK	30	20	55	65	30	60	40	25	25	65	85	35	%RK	25	25

NOTES: A heavily muscled young bull with great thickness, depth and capacity. Out of a superior female, N13 who has been a donor cow and stamps quality in her progeny. Top 20% for Birth Wgt.

PURCHASER:

PRICE: \$

LOT 57

WOONALLEE SHOWSTOPPER U665

BORN: 19/9/2023
 REG: WEEPU665
 EYE: 100/100
 COLOUR: Black
 HORN: Homo Polled

• BONNYDALE NUKARA

• WOONALLEE MESSIAH

SIRE WOONALLEE SHOW STOPPER

DAM WOONALLEE OLIVIA R657

• WOONALLEE SIMPLY THE BEST Q109

• WOONALLEE OLIVIA L73

	CE	BW	WW	YW	MILK	MCE	MWWT	STAY	DOC	CW	REA	MARB		API	TI
EPD	+8.8	+3.2	+81.0	+116.1	+14.9	+5.1	+55.4	+18.1	+12.3	29.9	1.01	0.11	INDEX	128.39	76.83
Acc	0.42	0.48	0.45	0.44	0.13	0.21	0.24	0.3	0.37	0.37	0.33	0.34			
%RK	70	70	40	55	95	65	75	20	55	45	20	45	%RK	45	45

NOTES: A larger framed bull with presence and constitution. Free moving and upstanding, he would suit the north. Top 20% for stay and eye muscle.

PURCHASER:

PRICE: \$

LOT 58

WOONALLEE SHOWSTOPPER U696

BORN: 27/9/2023
 REG: WEEPU696
 EYE: 100/100
 COLOUR: Black
 HORN: Homo Polled

• BONNYDALE NUKARA

• GW LUCKY MAN 644N

SIRE WOONALLEE SHOW STOPPER

DAM WOONALLEE R507

• WOONALLEE SIMPLY THE BEST Q109

• WOMBRAMURRA K076

	CE	BW	WW	YW	MILK	MCE	MWWT	STAY	DOC	CW	REA	MARB		API	TI
EPD	+11.3	+1.3	+88.3	+136.4	+17.5	+6.9	+61.7	+22.5	+12.8	37.2	0.81	0.33	INDEX	160.12	89.88
Acc	0.43	0.48	0.45	0.44	0.15	0.22	0.25	0.31	0.37	0.37	0.36	0.35			
%RK	40	35	15	15	80	35	45	1	50	25	55	15	%RK	3	3

NOTES: One of the younger bulls on offer, this Showstoppers best days are still to come. With a strong pedigree behind him he will continue to grow on. Top 1% for stay and top 3% for API & TI.

PURCHASER:

PRICE: \$

LOT 59

WOONALLEE MESSIAH U527

BORN: 29/8/2023
 REG: WEE3U527
 EYE: 100/100
 COLOUR: Black
 HORN: Homo Polled

• WOONALLEE MESSIAH

• BONNYDALE AUGUSTUS L84

SIRE WOONALLEE Q085

DAM WOMBRAMURRA N273

• WEBB TANK J670

• WOMBRAMURRA K072

	CE	BW	WW	YW	MILK	MCE	MWWT	STAY	DOC	CW	REA	MARB		API	TI
EPD	+13.0	+0.9	+76.0	+112.9	+20.3	+7.7	+58.3	+16.7	+9.8	33.4	0.91	0.26	INDEX	141.97	81.44
Acc	0.43	0.48	0.44	0.43	0.12	0.2	0.23	0.29	0.37	0.36	0.36	0.34			
%RK	25	30	55	60	60	25	60	35	85	35	40	20	%RK	20	20

NOTES: A deep sided, docile, easy doing bull with plenty of softness. A good calving ease option here. Top 20% for marbling, API and TI.



PURCHASER:

PRICE: \$



HT CAPITAL

We **adapt to make
a difference for
our clients**

Phone 08 8311 3714

Mike Tait : Tim Hudson : Nick Josipovic

www.htcapital.com.au

LOT **60**

WOONALLEE SHOWSTOPPER U475

BORN: 20/8/2023
 REG: WEEPU475
 EYE: 100/100
 COLOUR: Black
 HORN: Homo Polled

• BONNYDALE NUKARA

• WLB BOUNTY HUNTER 365C

SIRE WONALLEE SHOW STOPPER

DAM WONALLEE MISS LEGACY P355

• WONALLEE SIMPLY THE BEST Q109

• WONALLEE MISS LEGACY M356

	CE	BW	WW	YW	MILK	MCE	MWWT	STAY	DOC	CW	REA	MARB		API	TI
EPD	+15.1	-0.6	+78.7	+120.3	+17.9	+9.1	+57.3	+18.7	+9.5	26.8	0.84	-0.04	INDEX	136.47	77.47
Acc	0.43	0.49	0.45	0.43	0.15	0.21	0.25	0.3	0.37	0.36	0.35	0.34			
%RK	10	15	45	45	80	10	65	15	90	60	50	80	%RK	30	30

NOTES: Another sound footed Showstopper son carrying a little more hair. With an actual birthweight of 37kg, he is a safe choice for your heifers. Top 10% for Calving Ease and Top 15% for Birthweight.



PURCHASER:

PRICE: \$

LOT **61**

WOONALLEE MESSIAH U702

BORN: 30/9/2023
 REG: WEE3U702
 EYE: 100/100
 COLOUR: Homo Black
 HORN: Homo Polled

• WONALLEE MESSIAH

• LANCASTER JUGGLER J155

SIRE WONALLEE Q085

DAM WONALLEE BOOM TIME P407

• WEBB TANK J670

• WONALLEE BOOM TIME K300

	CE	BW	WW	YW	MILK	MCE	MWWT	STAY	DOC	CW	REA	MARB		API	TI
EPD	+7.5	+2.1	+68.0	+96.0	+22.6	+7.0	+56.6	+17.5	+13.0	23.7	0.78	0.04	INDEX	117.35	68.25
Acc	0.43	0.49	0.45	0.44	0.14	0.21	0.24	0.31	0.38	0.38	0.35	0.36			
%RK	80	50	85	90	40	35	70	25	45	70	60	60	%RK	70	70

NOTES: Extremely well made younger bull here with style, thickness and power. Could easily have been up earlier in the catalogue. Top 25% for stay.

PURCHASER:

PRICE: \$

LOT **62**

WOONALLEE SHOWSTOPPER U606

BORN: 9/9/2023
 REG: WEEPU606
 EYE: 100/100
 COLOUR: Homo Black
 HORN: Homo Polled

• BONNYDALE NUKARA

• NARACOOA NEUMANN

SIRE WONALLEE SHOW STOPPER

DAM WONALLEE CHARO R759

• WONALLEE SIMPLY THE BEST Q109

• WONALLEE CHARO H214

	CE	BW	WW	YW	MILK	MCE	MWWT	STAY	DOC	CW	REA	MARB		API	TI
EPD	+12.0	+2.1	+79.1	+123.2	+12.4	+8.5	+52.0	+18.0	+11.4	31.3	1.07	-0.11	INDEX	123.45	72.42
Acc	0.42	0.48	0.44	0.44	0.13	0.2	0.23	0.31	0.36	0.36	0.34	0.31			
%RK	35	50	45	35	100	15	85	25	70	40	15	90	%RK	55	55

NOTES: A mobile bull with great length wrapped in a slick skin. Backed by an extremely potent female line going back to Charo 604G. Top 15% for Eye muscle and Maternal Calving Ease.

PURCHASER:

PRICE: \$

LOT **63**

WOONALLEE MESSIAH U536

BORN: 31/8/2023
 REG: WEE3U536
 EYE: 100/100
 COLOUR: Homo Black
 HORN: Homo Polled

• WOONALLEE MESSIAH

SIRE WOONALLEE Q085

• WEBB TANK J670

• WEBB UPPERCUT H0613

DAM WOONALLEE BRIGADIER L485

• WEBB BRIGADIER G640

	CE	BW	WW	YW	MILK	MCE	MWWT	STAY	DOC	CW	REA	MARB		API	TI
EPD	+12.0	-0.3	+63.4	+88.5	+22.9	+7.3	+54.6	+16.4	+9.1	20.9	0.77	0.4	INDEX	143.93	78.59
Acc	0.43	0.48	0.45	0.44	0.15	0.21	0.25	0.3	0.37	0.37	0.35	0.35	%RK	15	15
%RK	35	15	95	95	40	30	80	40	90	80	65	10			

NOTES: A larger framed bull will extra length and lift. Free moving with extension through the front end, he would suit a heifer joining. Top 10% for Marbling and Top15% for Birth Weight.



PURCHASER:

PRICE: \$

LOT **64**

WOONALLEE S.K.W. U602

BORN: 6/9/2023
 REG: WEEPU602
 EYE: 100/100
 COLOUR: Black
 HORN: Homo Polled

• MADER WALK THIS WAY 224B

SIRE WOONALLEE S.K.W.

• WOMBRAMURRA L045

• BONNYDALE AUGUSTUS L84

DAM WOMBRAMURRA P153

• WOMBRAMURRA XSIM L STRIKE L200

	CE	BW	WW	YW	MILK	MCE	MWWT	STAY	DOC	CW	REA	MARB		API	TI
EPD	+12.8	+2.1	+75.0	+115.6	+22.0	+7.8	+59.5	+18.4	+12.1	32.6	0.78	0.22	INDEX	141.03	78.82
Acc	0.42	0.47	0.42	0.41	0.14	0.2	0.23	0.3	0.15	0.34	0.36	0.33	%RK	20	20
%RK	25	50	60	55	45	20	55	20	60	35	60	25			

NOTES: A deep bodied S.K.W son that will add kilos to your calves. Top 20% for stay and maternal calving ease.

PURCHASER:

PRICE: \$

LOT **65**

WOONALLEE MISSILE U636

BORN: 13/9/2023
 REG: WEEPU636
 EYE: 100/100
 COLOUR: Homo Black
 HORN: Homo Polled

• MRL MISSILE 138C

SIRE WOONALLEE P393

• WEBB DEW IT RIGHT J0608

• WHEATLAND ULTIMATE CHOICE

DAM WOONALLEE SASSY K72

• MRL MISS 390X

	CE	BW	WW	YW	MILK	MCE	MWWT	STAY	DOC	CW	REA	MARB		API	TI
EPD	+12.7	+2.2	+70.9	+102.5	+24.1	+3.7	+59.6	+18.6	+13.4	28.1	0.93	0.03	INDEX	127.51	71.02
Acc	0.42	0.49	0.46	0.45	0.19	0.24	0.28	0.31	0.39	0.37	0.36	0.36	%RK	45	45
%RK	30	50	75	80	30	85	55	15	40	55	35	65			

NOTES: A rugged carcase bull with huge power and performance. Top 15% for stay.

PURCHASER:

PRICE: \$

LOT 66 WOONALLEE HONOR U494

BORN: 24/8/2023
 REG: WEEPU494
 EYE: 100/100
 COLOUR: Homo Black
 HORN: Homo Polled

• HOOK'S BEACON 56B

• WOONALLEE P393

SIRE KBHR HONOR H060

DAM WOONALLEE HUMMER S667

• WS MISS SUGAR C4

• WOONALLEE HUMMER L468

	CE	BW	WW	YW	MILK	MCE	MWWT	STAY	DOC	CW	REA	MARB		API	TI
EPD	+18.7	-2.6	+78.3	+118.1	+30.0	+10.4	+69.2	+18.5	+14.3	33.8	0.82	0.52	INDEX	173.5	94.27
Acc	0.47	0.5	0.48	0.47	0.2	0.28	0.29	0.34	0.44	0.41	0.39	0.4			
%RK	1	2	50	50	4	2	15	20	25	35	55	3	%RK	1	1

NOTES: An Honor son with great softness and doing ability. A safe calving ease bull with an excellent data set. Top 4% or better for 7 traits, including calving ease and API.



PURCHASER:

PRICE: \$

LOT 67 WOONALLEE HONOR U540

BORN: 1/9/2023
 REG: WEE3U540
 EYE: 100/100
 COLOUR: Homo Black
 HORN: Homo Polled

• HOOK'S BEACON 56B

• GIBBS 2654Z BULLET PROOF

SIRE KBHR HONOR H060

DAM GIBBS 7077E LOUISE Y534

• WS MISS SUGAR C4

• SSF BLK LOUISE Y534

	CE	BW	WW	YW	MILK	MCE	MWWT	STAY	DOC	CW	REA	MARB		API	TI
EPD	+15.9	-2.1	+78.8	+127.7	+35.5	+10.4	+74.9	+21.6	+11.9	22.2	0.83	0.53	INDEX	178.98	96.1
Acc	0.44	0.47	0.49	0.49	0.23	0.27	0.32	0.36	0.46	0.43	0.42	0.42			
%RK	10	4	45	25	1	2	3	2	60	75	55	3	%RK	1	1

NOTES: Another imported embryo with great depth and softness. Top 4% or better for 8 traits including Top 1% for API.



PURCHASER:

PRICE: \$

LOT 68 WOONALLEE RAWHIDE U695

BORN: 26/9/2023
 REG: WEEPU695
 EYE: 100/100
 COLOUR: Homo Black
 HORN: Homo Polled

• WOONALLEE LICORICE L006

• HOOK'S BEACON 56B

SIRE WOONALLEE RAWHIDE

DAM WOMBRAMURRA P189

• WOONALLEE SASSY L372

• WOONALLEE HAYLEY L153

	CE	BW	WW	YW	MILK	MCE	MWWT	STAY	DOC	CW	REA	MARB		API	TI
EPD	+5.7	+2.0	+83.3	+130.8	+24.4	+2.9	+66.1	+20.1	+12.8	45.5	0.99	0.06	INDEX	130.19	78.83
Acc	0.43	0.49	0.43	0.43	0.16	0.22	0.25	0.32	0.39	0.38	0.36	0.36			
%RK	90	45	30	20	25	90	25	10	50	10	25	55	%RK	40	40

NOTES: A typical Rawhide son with muscle, thickness and doing ability. Top 10 % for Stay and Carcase Wgt.

PURCHASER:

PRICE: \$



More than meets the eye.

Precision in ruminant nutrition.



CONCENTRATES & BALANCERS



COMPLETE FEEDS



FARM ADVISORY SERVICES



RURAL SUPPLIES & EQUIPMENT



ANIMAL HEALTH



PASTURE AGRONOMY



HILLS FARM SUPPLIES

OFFICE (08) 8391 4629
sales@hillsfarmsupplies.com.au
24 Simper Crescent, Mount Barker SA.

The weaning to sale approach of feeding bulls at Woonallee

Eight years ago, Woonallee Simmentals sought our advice at Hills Farm Supplies to look at reshaping the way bulls are prepared for sale.

With this in mind there has been a move away from feeding bulls higher levels of grain in the lead up to sales and instead a much stronger focus on improving pasture, silage and hay quality across the entire year through a committed investment in both time and money grow more grass.

With the outstanding quality of silage and pastures achieved this year, this group of bulls is now entering the pre-sale feeding program with the need to only feed 2kg of barley per head per day as part of sale preparation. That can only be achieved with high quality forages replacing what was once grain in diets. We are proud to say the bulls are exceptionally well fed and well presented, but even prouder to say this is primarily the result of getting better at growing grass.

Bulls are now presented, fit and ready to work, structurally sound, and proven under forage-based systems.

As we work with Woonallee, we are not afraid to feed grain throughout the year if required, but what we do not want to do is feed it unnecessarily in place of the forages we should have grown.

Responsible feeding strategies, ensuring that lifetime production is never compromised.

All bulls have been fed a customised performance mineral and vitamin package throughout the year based on the results of tissue testing pastures and known animal requirements.

We correct any deficiencies and incorporate feed additives that are known to improve rumen function, immune function, hoof integrity and fertility. We are about health and longevity when addressing ruminant nutrition in the seedstock industry and this is why we are very confident that we have just made what has always been a great article even better.

Anthony Pearce

Managing Partner & Ruminant Production Systems Specialist for Hills Farm Supplies

BORN: 3/9/2023
 REG: WEE3U556
 EYE: 100/100
 COLOUR: Black
 HORN: Homo Polled

• WOONALLEE MESSIAH

• WOONALLEE JACK

SIRE WOONALLEE Q085

DAM WOONALLEE EXCITE N322

• WEBB TANK J670

• WOONALLEE EXCITE L162

	CE	BW	WW	YW	MILK	MCE	MWWT	STAY	DOC	CW	REA	MARB		API	TI
EPD	+12.0	+1.3	+66.4	+95.7	+17.6	+7.3	+50.8	+16.6	+12.2	23.7	0.83	0.37	INDEX	141.34	77.21
Acc	0.42	0.47	0.43	0.43	0.12	0.2	0.22	0.28	0.36	0.36	0.34	0.32	%RK	20	20
%RK	35	35	85	90	80	30	90	35	55	70	55	10			

NOTES: A moderate framed, solid built bull with plenty of loose skin. Top 10% for Marbling.

PURCHASER:

PRICE: \$

MultiBoost™ WITH B12

Five-way power to perform.

Copper Manganese Selenium Zinc Vitamin B12



Cattle with high energy demands need all the nutritional support they can get.

MultiBoost with B12 delivers four essential trace minerals and Vitamin B12 in a convenient, low-volume injection. Contact Elanco or your rural supplier today and find out how MultiBoost with B12 can support the health, fertility and performance of your cattle when they need it most.

Elanco™

farmanimal.elanco.com/au
 1800 995 709

Always read and follow the label directions. Results may vary based on current mineral status and additional sources of trace minerals. Elanco and the diagonal bar logo are trademarks of Elanco or its affiliates. MultiBoost is a trademark of Biocell Corporation. ©2024 Elanco or its affiliates. EAH24434, PM-AU-24-0496.

SimAngus Bulls

Lots 70 - 109



Lot 70 Woonallee Quixote U422



Lot 71 Woonallee Rembrandt U147



Lot 73 Woonallee Rembrandt U417



[VIEW ALL LOTS ONLINE](#)

SimAngus Bulls

There is no secret we have invested heavily in this section of our programme and with the purchases of Quixote and Rembrandt it has increased the profile and quality of these bulls. It's great to see these bulls develop into a serious group of beef bulls with explosive growth, capacity, thickness with docility and most importantly structurally sound. We don't use the bottom end black Simmental cows to create these bulls, we use our very best and it clearly shows. The options are endless as to how these bulls can be used. We have seen them working in so many different herds and environments around Australia and crossing with breeds such as Angus, SimAngus, Santa Gertrudis, Brahmans and many others. An added bonus is the value of the female progeny, they are proving to be some of the very best females within people's herds. Once again there are calving ease options highlighted in the catalogue for those chasing heifer bull options and these SimAngus bulls have proven to be highly successful for this application. Alternatively, there are plenty of power bull options designed to add extra performance and weight in your calves.

LOT 70 WOONALLEE QUIXOTE U422

BORN: 6/5/2023
REG: WEE1U422
EYE: 100/100
COLOUR: Homo Black
HORN: Homo Polled

• S CHISUM 255

• MR HOC BROKER

SIRE MILLAH MURRAH QUIXOTE Q96

DAM WOONALLEE CHARO J252

• MILLAH MURRAH BRENDA N8

• LFE CHARO 3N

	CE	BW	WW	YW	MILK	MCE	MWWT	STAY	DOC	CW	REA	MARB		API	TI
EPD	+15.8	-2.0	+75.4	+111.3	+20.0	+8.5	+57.7	+11.4	+7.1	27.4	0.52	0.03	INDEX	125.44	77.68
Acc	0.43	0.49	0.47	0.47	0.15	0.22	0.26	0.29	0.38	0.38	0.35	0.36			
%RK	10	4	60	65	65	15	65	90	100	55	95	65	%RK	50	50

NOTES:



PURCHASER:

PRICE: \$

LOT 71 WOONALLEE REMBRANDT U147

BORN: 31/3/2023
REG: WEE1U147
EYE: 100/100
COLOUR: Homo Black
HORN: Homo Polled

• MILLAH MURRAH PARATROOPER P15

• WOONALLEE LIEUTENANT

SIRE MILLAH MURRAH REMBRANDT R48

DAM WOONALLEE CHARO P142

• MILLAH MURRAH ABIGAIL N60

• WOONALLEE CHARO L50

	CE	BW	WW	YW	MILK	MCE	MWWT	STAY	DOC	CW	REA	MARB		API	TI
EPD	+16.8	-2.4	+60.4	+101.7	+21.9	+8.7	+52.1	+12.7	+14.4	39.1	0.49	0.47	INDEX	150.74	81.23
Acc	0.4	0.47	0.43	0.44	0.1	0.17	0.21	0.26	0.33	0.35	0.32	0.32			
%RK	4	3	95	85	45	10	85	80	25	20	95	5	%RK	10	10

NOTES:



PURCHASER:

PRICE: \$

LOT **72**

WOONALLEE CONVERSION U154

BORN: 1/4/2023
 REG: WEE1U154
 EYE: 100/100
 COLOUR: Black
 HORN: Homo Polled

• MILLAH MURRAH CONVERSION L298

• WOONALLEE LICORICE L006

SIRE **WOONALLEE WOMBAMURRA Q129**

DAM **WOONALLEE N170**

• WOMBAMURRA XSIM MISS L ONE K2

• WOONALLEE L257

	CE	BW	WW	YW	MILK	MCE	MWWT	STAY	DOC	CW	REA	MARB		API	TI
EPD	+9.9	+1.7	+71.0	+106.7	+23.2	+5.9	+58.7	+10.6	+15.0	32.4	0.66	0.18	INDEX	116.61	74.04
Acc	0.41	0.48	0.43	0.44	0.12	0.19	0.22	0.26	0.35	0.36	0.32	0.32			
%RK	55	40	75	75	35	50	60	90	20	40	80	35	%RK	70	70

NOTES:

PURCHASER:

PRICE: \$

LOT **73**

WOONALLEE REMBRANDT U417

BORN: 4/5/2023
 REG: WEE1U417
 EYE: 100/100
 COLOUR: Homo Black
 HORN: Homo Polled

• MILLAH MURRAH PARATROOPER P15

• WOONALLEE LORENZO

SIRE **MILLAH MURRAH REMBRANDT R48**

DAM **WOONALLEE WOMBAMURRA P026**

• MILLAH MURRAH ABIGAIL N60

• WOMBAMURRA F286

	CE	BW	WW	YW	MILK	MCE	MWWT	STAY	DOC	CW	REA	MARB		API	TI
EPD	+16.0	+0.4	+80.0	+132.9	+22.5	+8.9	+62.5	+10.5	+17.0	39.7	0.34	0.52	INDEX	151.2	90.98
Acc	0.37	0.42	0.38	0.38	0.09	0.15	0.19	0.27	0.32	0.33	0.31	0.32			
%RK	10	25	40	20	40	10	40	95	10	20	100	3	%RK	10	10

NOTES:



PURCHASER:

PRICE: \$

LOT **74**

WOONALLEE MISSILE U115

BORN: 29/3/2023
 REG: WEE2U115
 EYE: 100/100
 COLOUR: Black
 HORN: Homo Polled

• MRL MISSILE 138C

• YERWAL EST JET BLACK

SIRE **WOONALLEE P393**

DAM **WOONALLEE CHARDONNAY N483**

• WEBB DEW IT RIGHT J0608

• WOONALLEE CHARDONNEY K193

	CE	BW	WW	YW	MILK	MCE	MWWT	STAY	DOC	CW	REA	MARB		API	TI
EPD	+10.1	+2.8	+65.8	+86.7	+20.5	+5.7	+53.4	+19.2	+14.6	12.9	0.43	0.23	INDEX	130.73	70.2
Acc	0.42	0.49	0.45	0.46	0.16	0.21	0.26	0.3	0.38	0.38	0.34	0.34			
%RK	55	60	90	100	60	55	80	15	25	95	100	25	%RK	40	40

NOTES:

PURCHASER:

PRICE: \$

LOT 75

WOONALLEE PARATROOPER U107

BORN: 28/3/2023
 REG: WEE1U107
 EYE: 100/100
 COLOUR: Homo Black
 HORN: Homo Polled

• MILLAH MURRAH PARATROOPER P15

• WOONALLEE NORWOOD

SIRE WOONALLEE R475

DAM WOONALLEE AFRICA Q099

• WOMBRAMURRA L030

• WOONALLEE AFRICA N133

	CE	BW	WW	YW	MILK	MCE	MWWT	STAY	DOC	CW	REA	MARB		API	TI
EPD	+5.7	+3.9	+88.4	+130.0	+25.0	+2.7	+69.2	+11.6	+14.1	33.6	0.96	0.21	INDEX	118.98	83.28
Acc	0.41	0.47	0.43	0.43	0.09	0.17	0.2	0.28	0.38	0.37	0.34	0.32			
%RK	90	80	15	25	25	90	15	85	30	35	30	30	%RK	65	65

NOTES:

PURCHASER:

PRICE: \$

LOT 76

WOONALLEE QUIXOTE U327

BORN: 16/4/2023
 REG: WEE1U327
 EYE: 100/100
 COLOUR: Black
 HORN: Homo Polled

• S CHISUM 255

• LFE BISS BLACK ADVANCE 426U

SIRE MILLAH MURRAH QUIXOTE Q96

DAM WOONALLEE MS LEWIS L350

• MILLAH MURRAH BRENDA N8

• LFE BS MS LEWIS 646R

	CE	BW	WW	YW	MILK	MCE	MWWT	STAY	DOC	CW	REA	MARB		API	TI
EPD	+12.3	+0.1	+76.8	+109.9	+21.1	+6.2	+59.5	+11.7	+10.6	26.3	0.39	0.25	INDEX	129.12	80.53
Acc	0.42	0.48	0.45	0.46	0.13	0.2	0.24	0.28	0.35	0.37	0.36	0.34			
%RK	30	20	55	70	55	45	55	85	80	60	100	25	%RK	45	45

NOTES:

PURCHASER:

PRICE: \$

LOT 77

WOONALLEE PARATROOPER U254

BORN: 9/4/2023
 REG: WEE1U254
 EYE: 100/100
 COLOUR: Homo Black
 HORN: Homo Polled

• MILLAH MURRAH PARATROOPER P15

• HOOK'S BEACON 56B

SIRE WOONALLEE R475

DAM WOONALLEE ELAINE Q011

• WOMBRAMURRA L030

• WOONALLEE ELAINE N72

	CE	BW	WW	YW	MILK	MCE	MWWT	STAY	DOC	CW	REA	MARB		API	TI
EPD	+9.8	+2.7	+88.8	+124.4	+27.2	+7.6	+71.6	+16.8	+10.4	45.2	0.8	0.29	INDEX	139.35	86.97
Acc	0.42	0.48	0.41	0.41	0.1	0.19	0.2	0.29	0.35	0.35	0.35	0.35			
%RK	60	60	15	35	15	25	10	35	80	10	60	20	%RK	25	25

NOTES:

PURCHASER:

PRICE: \$



Livestock insurance that fits

In the livestock business, we understand it takes years to breed and produce your stock, which is why it pays to make sure you're protected if the unexpected occurs.

Contact Daniel Menzel for a personalised quote today
0429 150 719  Elders Insurance Bordertown



Insurance

Elders Insurance (Underwriting Agency) Pty Ltd, (ABN 56 138 879 026, AFSL 340965), acting under its own AFSL, distributes Elders Insurance products on behalf of CBE Insurance (Australia) Ltd (ABN 78 003 191 035, AFSL 239545), the product issuer. Visit www.eldersinsurance.com.au to consider the relevant Product Disclosure Statement and any applicable Target Market Determination to decide if the product is right for you. Daniel Menzel Pty Ltd The Trustee for DJ Menzel Family Trust ABN 90369432063 trading as Elders Insurance Bordertown AR No. 469138 is an Authorised Representative of Elders Insurance (Underwriting Agency) Pty Limited (ABN 56 138 879 026, AFSL 340965) (EUA). EUA, acting under its own AFSL, is authorised to distribute Elders Insurance products on behalf of CBE Insurance (Australia) Limited (ABN 78 003 191 035, AFSL 239545), the product issuer. Visit www.eldersinsurance.com.au to consider the Product Disclosure Statement and any applicable Target Market Determination to decide if the product is right for you.

LOT 78

WOONALLEE GUARDIAN U1

BORN: 15/3/2023
 REG: WEE2U001
 EYE: 100/100
 COLOUR: Homo Black
 HORN: Homo Polled

• HOOK'S BEACON 56B

• GK 323 PHOENIX P4

SIRE CLRS GUARDIAN 317G

DAM WOONALLEE DAIQUIRI S421

• CLRS ALWAYS XCELLENT

• WOONALLEE DAIQUIRI M24

	CE	BW	WW	YW	MILK	MCE	MWWT	STAY	DOC	CW	REA	MARB		API	TI
EPD	+11.6	+0.1	+91.0	+138.1	+19.9	+8.5	+65.4	+19.2	+3.5	38	1.06	0.3	INDEX	154.33	91.83
Acc	0.46	0.49	0.47	0.47	0.2	0.27	0.29	0.36	0.44	0.41	0.4	0.38			
%RK	40	20	10	15	65	15	25	15	100	20	15	20	%RK	10	10

NOTES:



PURCHASER:

PRICE: \$

LOT 79

WOONALLEE GUARDIAN U88

BORN: 28/3/2023
 REG: WEE2U088
 EYE: 100/100
 COLOUR: Homo Black
 HORN: Homo Polled

• HOOK'S BEACON 56B

• LANCASTER NATURAL

SIRE CLRS GUARDIAN 317G

DAM WOONALLEE S057

• CLRS ALWAYS XCELLENT

• WOONALLEE SHEILA P163

	CE	BW	WW	YW	MILK	MCE	MWWT	STAY	DOC	CW	REA	MARB		API	TI
EPD	+16.9	-2.0	+83.4	+128.0	+19.5	+7.8	+61.2	+21.1	+5.6	52.6	1.38	0.51	INDEX	178.4	96.3
Acc	0.47	0.51	0.49	0.49	0.22	0.29	0.31	0.36	0.44	0.43	0.42	0.4			
%RK	4	4	30	25	65	20	45	3	100	2	1	3	%RK	1	1

NOTES:



PURCHASER:

PRICE: \$

LOT 80

WOONALLEE MISSILE U155

BORN: 1/4/2023
 REG: WEE2U155
 EYE: 100/100
 COLOUR: Homo Black
 HORN: Homo Polled

• MRL MISSILE 138C

• WOONALLEE HUMDINGER

SIRE WOONALLEE P393

DAM WOONALLEE CAPTAIN N455

• WEBB DEW IT RIGHT J0608

• WEBB CAPTAIN H0909

	CE	BW	WW	YW	MILK	MCE	MWWT	STAY	DOC	CW	REA	MARB		API	TI
EPD	+11.5	+1.1	+62.3	+86.5	+20.9	+7.8	+52.1	+21.9	+11.9	4.8	0.37	0.07	INDEX	131.64	66.56
Acc	0.43	0.49	0.46	0.47	0.18	0.22	0.27	0.3	0.39	0.38	0.34	0.34			
%RK	40	35	95	100	55	20	85	2	60	100	100	55	%RK	35	35

NOTES:

PURCHASER:

PRICE: \$

LOT **81**

WOONALLEE REMBRANDT U100

BORN: 28/3/2023
 REG: WEE1U100
 EYE: 100/100
 COLOUR: Homo Black
 HORN: Homo Polled

• MILLAH MURRAH PARATROOPER P15

• LANCASTER HIGH PROFILE H338

SIRE MILLAH MURRAH REMBRANDT R48

DAM WOONALLEE KATARINA P198

• MILLAH MURRAH ABIGAIL N60

• WOONALLEE KATARINA M72

	CE	BW	WW	YW	MILK	MCE	MWWT	STAY	DOC	CW	REA	MARB		API	TI
EPD	+17.0	-1.2	+67.3	+103.6	+25.3	+11.3	+59.0	+8.6	+15.2	43.3	0.9	0.35	INDEX	135.68	81.32
Acc	0.37	0.42	0.39	0.39	0.09	0.15	0.19	0.27	0.33	0.32	0.32	0.31			
%RK	4	10	85	80	20	1	55	100	20	10	40	15	%RK	30	30

NOTES:



PURCHASER:

PRICE: \$

LOT **82**

WOONALLEE HONOR U18

BORN: 21/3/2023
 REG: WEE2U018
 EYE: 100/100
 COLOUR: Homo Black
 HORN: Homo Polled

• HOOK'S BEACON 56B

• LANCASTER NATURAL

SIRE KBHR HONOR H060

DAM WOONALLEE S035

• WS MISS SUGAR C4

• WOONALLEE ICEMAN N362

	CE	BW	WW	YW	MILK	MCE	MWWT	STAY	DOC	CW	REA	MARB		API	TI
EPD	+19.7	-4.1	+64.8	+101.4	+27.0	+11.3	+59.4	+17.5	+9.0	18.6	0.96	0.46	INDEX	168.8	87.47
Acc	0.47	0.5	0.47	0.48	0.18	0.26	0.28	0.34	0.42	0.43	0.39	0.39			
%RK	1	1	90	85	15	1	55	25	90	85	30	5	%RK	1	1

NOTES:



PURCHASER:

PRICE: \$



Local fuel distributors throughout the Southeast of South Australia
 Retail & Bulk Fuels

'LOCALS SUPPORTING LOCALS'

Millicent (08) 8733 3133 Mt Gambier (08) 8721 1778

LOT 83

WOONALLEE CONVERSION U580

BORN: 6/9/2023
 REG: WEE1U580
 EYE: 100/100
 COLOUR: Homo Black
 HORN: Homo Polled

• MILLAH MURRAH CONVERSION L298

• LANCASTER JUGGLER J155

SIRE WOMBAMURRA Q129

DAM WOONALLEE GOLDMARK N32

• WOMBAMURRA XSIM MISS L ONE K2

• PATHFINDER GOLDMARK G224

	CE	BW	WW	YW	MILK	MCE	MWWT	STAY	DOC	CW	REA	MARB		API	TI
EPD	+6.2	+4.4	+93.1	+142.5	+31.0	+6.1	+77.6	+13.0	+15.6	54.5	0.77	0.25	INDEX	124.64	86.18
Acc	0.41	0.48	0.43	0.43	0.11	0.19	0.22	0.27	0.35	0.37	0.32	0.33			
%RK	90	85	10	10	3	50	2	75	15	2	65	25	%RK	50	50

NOTES:

PURCHASER:

PRICE: \$

LOT 84

WOONALLEE MISSILE U609

BORN: 10/9/2023
 REG: WEE2U609
 EYE: 100/100
 COLOUR: Homo Black
 HORN: Homo Polled

• MRL MISSILE 138C

• BONNYDALE AUGUSTUS L84

SIRE WOONALLEE P393

DAM WOMBAMURRA N153

• WEBB DEW IT RIGHT J0608

• WOMBAMURRA J200

	CE	BW	WW	YW	MILK	MCE	MWWT	STAY	DOC	CW	REA	MARB		API	TI
EPD	+6.7	+4.2	+79.9	+117.4	+22.5	+2.1	+62.5	+12.6	+14.1	33.7	0.78	0.13	INDEX	112.59	74.72
Acc	0.41	0.48	0.44	0.43	0.16	0.2	0.25	0.29	0.38	0.35	0.34	0.35			
%RK	85	85	40	50	40	95	40	80	30	35	60	40	%RK	75	75

NOTES:

PURCHASER:

PRICE: \$

LOT 85

WOONALLEE MISSILE U615

BORN: 11/9/2023
 REG: WEE2U615
 EYE: 100/100
 COLOUR: Homo Black
 HORN: Homo Polled

• MRL MISSILE 138C

• ST PAULS PB 615F CAPTAIN C607

SIRE WOONALLEE P393

DAM WEBB CAPTAIN H0691

• WEBB DEW IT RIGHT J0608

• WEBB BLACK NORA

	CE	BW	WW	YW	MILK	MCE	MWWT	STAY	DOC	CW	REA	MARB		API	TI
EPD	+11.5	+4.3	+68.1	+106.6	+31.0	+5.5	+65.1	+17.6	+11.7	16.2	0.46	0	INDEX	118.37	66.59
Acc	0.43	0.49	0.46	0.45	0.19	0.22	0.28	0.31	0.39	0.37	0.35	0.36			
%RK	40	85	85	75	3	60	25	25	65	90	95	70	%RK	65	65

NOTES:

PURCHASER:

PRICE: \$

LOT **86**

WOONALLEE CONVERSION U483

BORN: 22/8/2023
 REG: WEE1U483
 EYE: 100/100
 COLOUR: Homo Black
 HORN: Homo Polled

• MILLAH MURRAH CONVERSION L298

• BONNYDALE AUGUSTUS L84

SIRE WOMBAMURRA Q129

DAM WOMBAMURRA N078

• WOMBAMURRA XSIM MISS L ONE K2

• WOMBAMURRA J009

	CE	BW	WW	YW	MILK	MCE	MWWT	STAY	DOC	CW	REA	MARB		API	TI
EPD	+12.4	-0.9	+68.2	+103.9	+27.2	+7.1	+61.3	+20.2	+12.1	27.4	0.51	0.19	INDEX	144.03	77.14
Acc	0.41	0.48	0.43	0.42	0.11	0.19	0.22	0.28	0.36	0.34	0.34	0.33	%RK	15	15
%RK	30	10	85	80	15	30	45	10	60	55	95	30	%RK	15	15

NOTES:



PURCHASER:

PRICE: \$

LOT **87**

WOONALLEE REMBRANDT U541

BORN: 1/9/2023
 REG: WEE1U541
 EYE: 100/100
 COLOUR: Homo Black
 HORN: Homo Polled

• MILLAH MURRAH PARATROOPER P15

• LANCASTER BRIGADIER

SIRE MILLAH MURRAH REMBRANDT R48

DAM WEBB MISS LEGACY F419

• MILLAH MURRAH ABIGAIL N60

• SAROKOS PARK MISS LEGACY A100

	CE	BW	WW	YW	MILK	MCE	MWWT	STAY	DOC	CW	REA	MARB		API	TI
EPD	+14.9	-1.2	+62.4	+95.3	+24.1	+8.8	+55.3	+14.6	+12.8	34.8	0.34	0.56	INDEX	153.43	82.3
Acc	0.42	0.48	0.42	0.41	0.09	0.16	0.2	0.27	0.33	0.33	0.32	0.33	%RK	10	10
%RK	15	10	95	90	30	10	75	60	50	30	100	2	%RK	10	10

NOTES:



PURCHASER:

PRICE: \$

LOT **88**

WOONALLEE REMBRANDT U625

BORN: 12/9/2023
 REG: WEE1U625
 EYE: 100/100
 COLOUR: Homo Black
 HORN: Homo Polled

• MILLAH MURRAH PARATROOPER P15

• BONNYDALE AUGUSTUS L84

SIRE MILLAH MURRAH REMBRANDT R48

DAM WOMBAMURRA N140

• MILLAH MURRAH ABIGAIL N60

• LANGTON-GATE A081

	CE	BW	WW	YW	MILK	MCE	MWWT	STAY	DOC	CW	REA	MARB		API	TI
EPD	+15.6	+0.3	+84.2	+134.3	+20.7	+8.3	+62.8	+13.9	+13.8	54.7	0.31	0.51	INDEX	156.48	91.89
Acc	0.4	0.47	0.42	0.41	0.08	0.16	0.19	0.28	0.33	0.34	0.32	0.31	%RK	5	5
%RK	10	20	25	15	60	15	35	70	35	2	100	3	%RK	5	5

NOTES:



PURCHASER:

PRICE: \$

LOT 89 WOONALLEE CONVERSION U566

BORN: 4/9/2023
 REG: WEE1U566
 EYE: 100/100
 COLOUR: Homo Black
 HORN: Homo Polled

• MILLAH MURRAH CONVERSION L298
SIRE WOMBAMURRA Q129
 • WOMBAMURRA XSIM MISS L ONE K2

• MILLAH MURRAH KLOONEY M189
DAM WOMBAMURRA Q114
 • WOMBAMURRA N170

	CE	BW	WW	YW	MILK	MCE	MWWT	STAY	DOC	CW	REA	MARB		API	TI
EPD	+8.3	+3.7	+81.4	+113.8	+30.4	+6.4	+71.1	+13.1	+15.2	50.7	0.89	0.26	INDEX	122.99	80.02
Acc	0.41	0.47	0.42	0.41	0.09	0.18	0.2	0.27	0.33	0.34	0.31	0.33			
%RK	75	75	35	60	3	40	10	75	20	3	40	20	%RK	55	55

NOTES:

PURCHASER: _____ PRICE: \$ _____

LOT 90 WOONALLEE CONVERSION U641

BORN: 14/9/2023
 REG: WEE1U641
 EYE: 100/100
 COLOUR: Homo Black
 HORN: Homo Polled

• MILLAH MURRAH CONVERSION L298
SIRE WOMBAMURRA Q129
 • WOMBAMURRA XSIM MISS L ONE K2

• MILLAH MURRAH EMPEROR K184
DAM WOMBAMURRA N055
 • WOMBAMURRA G056

	CE	BW	WW	YW	MILK	MCE	MWWT	STAY	DOC	CW	REA	MARB		API	TI
EPD	+8.5	+4.1	+87.6	+132.7	+27.5	+6.0	+71.3	+13.2	+14.5	51.1	0.65	0.5	INDEX	140.03	89.4
Acc	0.4	0.46	0.41	0.41	0.1	0.17	0.2	0.27	0.34	0.33	0.32	0.32			
%RK	70	80	20	20	10	50	10	75	25	3	80	4	%RK	20	20

NOTES:

PURCHASER: _____ PRICE: \$ _____

LOT 91 WOONALLEE MISSILE U633

BORN: 12/9/2023
 REG: WEE2U633
 EYE: 100/100
 COLOUR: Homo Black
 HORN: Homo Polled

• MRL MISSILE 138C
SIRE WOONALLEE P393
 • WEBB DEW IT RIGHT J0608

• GW PREMIUM BEEF 021TS
DAM WOMBAMURRA H034
 • WOMBAMURRA F286

	CE	BW	WW	YW	MILK	MCE	MWWT	STAY	DOC	CW	REA	MARB		API	TI
EPD	+10.1	+4.0	+80.5	+126.2	+25.0	+4.4	+65.3	+13.6	+15.6	32.4	0.7	0.18	INDEX	124.55	78.33
Acc	0.44	0.49	0.45	0.45	0.19	0.25	0.28	0.32	0.41	0.39	0.35	0.36			
%RK	55	80	40	30	25	75	25	70	15	40	75	35	%RK	55	55

NOTES:

PURCHASER: _____ PRICE: \$ _____

LOT **92**

WOONALLEE MISSILE U589

BORN: 7/9/2023
 REG: WEE2U589
 EYE:
 COLOUR:
 HORN:

• MRL MISSILE 138C

SIRE WONALLEE P393

• WEBB DEW IT RIGHT J0608

• LANCASTER JUGGLER J155

DAM WONALLEE UPGRADE M241

• WEBB UPGRADE H0918

	CE	BW	WW	YW	MILK	MCE	MWWT	STAY	DOC	CW	REA	MARB		API	TI
EPD	+13.2	+1.5	+84.6	+125.1	+27.9	+7.3	+70.2	+16.9	+13.8	23.5	0.77	0.19	INDEX	140.44	84.5
Acc	0.25	0.36	0.31	0.29	0.18	0.18	0.22	0.13	0.21	0.22	0.2	0.18			
%RK	25	40	25	35	10	30	10	35	35	70	65	30	%RK	20	20

NOTES:

PURCHASER:

PRICE: \$

LOT **93**

WOONALLEE PARATROOPER U568

BORN: 5/9/2023
 REG: WEE1U568
 EYE: 100/100
 COLOUR: Homo Black
 HORN: Homo Polled

• MILLAH MURRAH PARATROOPER P15

SIRE WONALLEE R475

• WOMBRAMURRA L030

• LANCASTER NATURAL

DAM WONALLEE UNLIMITED R748

• WOONALLEE UNLIMITED L301

	CE	BW	WW	YW	MILK	MCE	MWWT	STAY	DOC	CW	REA	MARB		API	TI
EPD	+12.0	+1.9	+80.1	+112.7	+22.4	+7.2	+62.5	+12.5	+11.1	28.5	0.88	0.35	INDEX	135.76	84.45
Acc	0.4	0.47	0.42	0.41	0.08	0.16	0.19	0.26	0.34	0.34	0.32	0.32			
%RK	35	45	40	60	45	30	40	80	75	55	45	15	%RK	30	30

NOTES:

PURCHASER:

PRICE: \$

LOT **94**

WOONALLEE REMBRANDT U543

BORN: 1/9/2023
 REG: WEE1U543
 EYE: 100/100
 COLOUR: Homo Black
 HORN: Homo Polled

• MILLAH MURRAH PARATROOPER P15

SIRE MILLAH MURRAH REMBRANDT R48

• MILLAH MURRAH ABIGAIL N60

• WOONALLEE HUMDINGER

DAM WONALLEE CAPTAIN M343

• WEBB CAPTAIN H0922

	CE	BW	WW	YW	MILK	MCE	MWWT	STAY	DOC	CW	REA	MARB		API	TI
EPD	+8.0	+4.1	+75.4	+121.9	+24.5	+7.1	+62.2	+12.0	+12.8	29.1	0.35	0.42	INDEX	128.7	79.83
Acc	0.4	0.47	0.42	0.41	0.08	0.16	0.19	0.26	0.31	0.33	0.32	0.3			
%RK	75	80	60	40	25	30	40	85	50	50	100	10	%RK	45	45

NOTES:

PURCHASER:

PRICE: \$

LOT **95**

WOONALLEE LODESTAR U507

BORN: 26/8/2023
 REG: WEE1U507
 EYE: 100/100
 COLOUR: Black
 HORN: Homo Polled

• REDHILL 672X X004 231A

• WOMBRAMURRA Q129

SIRE IR LODESTAR H380

DAM WOONALLEE UPGRADE S643

• IR MS LUCY E711

• WOONALLEE UPGRADE M241

	CE	BW	WW	YW	MILK	MCE	MWWT	STAY	DOC	CW	REA	MARB		API	TI
EPD	+11.0	-0.4	+89.7	+134.4	+28.5	+8.6	+73.4	+14.8	+11.5	53	1.01	0.75	INDEX	169.11	103.06
Acc	0.43	0.48	0.44	0.44	0.12	0.22	0.23	0.28	0.38	0.37	0.36	0.36			
%RK	10	1	5	3	35	3	10	40	25	1	10	1	%RK	1	1

NOTES:



PURCHASER:

PRICE: \$

LOT **96**

WOONALLEE PARATROOPER U686

BORN: 24/9/2023
 REG: WEE1U686
 EYE: 100/100
 COLOUR: Homo Black
 HORN: Homo Polled

• MILLAH MURRAH PARATROOPER P15

• MILLAH MURRAH CONVERSION L298

SIRE WOONALLEE R475

DAM WOONALLEE R523

• WOMBRAMURRA L030

• WOMBRAMURRA N170

	CE	BW	WW	YW	MILK	MCE	MWWT	STAY	DOC	CW	REA	MARB		API	TI
EPD	+10.9	+3.7	+84.0	+130.0	+25.6	+6.7	+67.6	+13.5	+14.3	34	0.5	0.19	INDEX	126.6	80.55
Acc	0.41	0.47	0.42	0.41	0.07	0.16	0.19	0.26	0.34	0.34	0.31	0.31			
%RK	45	75	30	25	20	40	15	70	25	30	95	30	%RK	50	50

NOTES:

PURCHASER:

PRICE: \$

LOT **97**

WOONALLEE REMBRANDT U637

BORN: 13/9/2023
 REG: WEE1U637
 EYE: 100/100
 COLOUR: Homo Black
 HORN: Homo Polled

• MILLAH MURRAH PARATROOPER P15

• CCR COWBOY CUT 5048Z

SIRE MILLAH MURRAH REMBRANDT R48

DAM WOONALLEE UPGRADE L445

• MILLAH MURRAH ABIGAIL N60

• WEBB UPGRADE H889

	CE	BW	WW	YW	MILK	MCE	MWWT	STAY	DOC	CW	REA	MARB		API	TI
EPD	+17.6	-2.0	+71.6	+104.7	+22.8	+10.8	+58.6	+15.2	+12.9	32.8	0.12	0.65	INDEX	166.59	90.22
Acc	0.41	0.48	0.43	0.42	0.1	0.17	0.21	0.28	0.34	0.34	0.34	0.33			
%RK	3	4	75	80	40	2	60	55	45	35	100	1	%RK	2	2

NOTES:



PURCHASER:

PRICE: \$



millicent | kingston
veterinary clinic

millicent & kingston veterinary clinic



LIVESTOCK SERVICES

- ✓ Pregnancy diagnosis and aging
- ✓ Bull testing & semen evaluation
- ✓ Herd health consultancy & planning
- ✓ Farmer focus group work
- ✓ Health certificates
- ✓ Biosecurity plans
- ✓ In house laboratory testing
- ✓ Trace element testing
- ✓ Disease prevention & investigation
- ✓ Heifer management
- ✓ Emergency service & obstetrics
- ✓ Reproductive consultancy & planning

making life better

Servicing the South East

Millicent, Kingston, Robe, Furner,
Tantanoola, Kalangadoo,
Lucindale, Meningie & beyond

Millicent Veterinary Clinic

62 Mount Gambier Road
Millicent SA 5280 (08) 87 332 782

Kingston Veterinary Clinic

8 East Terrace
Kingston SE SA 5275 (08) 87 672 516

admin@millicentvet.com.au | www.millicentvet.com.au | admin@kingstonsevet.com.au

LOT 98 WOONALLEE PARATROOPER U707

BORN: 1/10/2023
 REG: WEE1U707
 EYE: 100/100
 COLOUR: Homo Black
 HORN: Homo Polled

• MILLAH MURRAH PARATROOPER P15

• NARACOOPA NEUMANN

SIRE WOONALLEE R475

DAM WOONALLEE ADA R691

• WOMBRAMURRA L030

• WOONALLEE N476

	CE	BW	WW	YW	MILK	MCE	MWWT	STAY	DOC	CW	REA	MARB		API	TI
EPD	+5.6	+5.4	+85.3	+124.9	+18.5	+3.9	+61.2	+10.8	+16.8	35.4	0.97	0.18	INDEX	111.55	78.3
Acc	0.4	0.47	0.42	0.41	0.08	0.16	0.19	0.26	0.33	0.33	0.31	0.31			
%RK	95	95	25	35	75	80	45	90	10	30	30	35	%RK	80	80

NOTES:

PURCHASER:

PRICE: \$

LOT 99 WOONALLEE QUIXOTE U714

BORN: 5/10/2023
 REG: WEE1U714
 EYE: 100/100
 COLOUR: Homo Black
 HORN: Homo Polled

• S CHISUM 255

• CCR COWBOY CUT 5048Z

SIRE MILLAH MURRAH QUIXOTE Q96

DAM WOONALLEE UPGRADE L463

• MILLAH MURRAH BRENDA N8

• WEBB UPGRADE H876

	CE	BW	WW	YW	MILK	MCE	MWWT	STAY	DOC	CW	REA	MARB		API	TI
EPD	+16.2	-1.0	+80.0	+122.2	+22.8	+8.5	+62.8	+10.3	+15.1	34.3	0.67	0.33	INDEX	141.04	87.4
Acc	0.42	0.48	0.44	0.44	0.13	0.21	0.23	0.29	0.37	0.36	0.34	0.36			
%RK	10	10	40	40	40	15	35	95	20	30	80	15	%RK	20	20

NOTES:



PURCHASER:

PRICE: \$

LOT 100 WOONALLEE CONVERSION U622

BORN: 12/9/2023
 REG: WEE1U622
 EYE: 100/100
 COLOUR: Homo Black
 HORN: Homo Polled

• MILLAH MURRAH CONVERSION L298

• WEBB UPPERCUT H0613

SIRE WOMBRAMURRA Q129

DAM WOONALLEE CHOCOLATE M253

• WOMBRAMURRA XSIM MISS L ONE K2

• PATHFINDER CHOCOLATE C364

	CE	BW	WW	YW	MILK	MCE	MWWT	STAY	DOC	CW	REA	MARB		API	TI
EPD	+10.6	+1.0	+72.1	+105.3	+31.7	+7.7	+67.8	+18.2	+9.8	24.2	0.77	0.36	INDEX	144.21	81.35
Acc	0.41	0.47	0.42	0.42	0.11	0.18	0.21	0.27	0.35	0.35	0.32	0.34			
%RK	50	30	70	75	2	25	15	20	85	70	65	15	%RK	15	15

NOTES:

PURCHASER:

PRICE: \$

LOT 101

WOONALLEE QUIXOTE U663

BORN: 18/9/2023
 REG: WEE1U663
 EYE: 100/100
 COLOUR: Homo Black
 HORN: Homo Polled

• S CHISUM 255

SIRE MILLAH MURRAH QUIXOTE Q96

• MILLAH MURRAH BRENDA N8

• WLB BOUNTY HUNTER 365C

DAM WOONALLEE CHARO P360

• WOONALLEE CHARO M386

	CE	BW	WW	YW	MILK	MCE	MWWT	STAY	DOC	CW	REA	MARB		API	TI
EPD	+10.8	+1.6	+88.7	+142.1	+23.6	+7.0	+68.0	+6.0	+13.2	56.7	0.72	0.36	INDEX	126.56	89.47
Acc	0.4	0.45	0.41	0.41	0.1	0.2	0.2	0.27	0.36	0.34	0.32	0.34			
%RK	45	40	15	10	35	35	15	100	40	1	70	15	%RK	50	50

NOTES:

PURCHASER:

PRICE: \$

LOT 102

WOONALLEE REMBRANDT U603

BORN: 9/9/2023
 REG: WEE1U603
 EYE: 100/100
 COLOUR: Homo Black
 HORN: Homo Polled

• MILLAH MURRAH PARATROOPER P15

SIRE MILLAH MURRAH REMBRANDT R48

• MILLAH MURRAH ABIGAIL N60

• TNT TANKER U263

DAM WEBB TANK J654

• WEBB CAPTAIN G765

	CE	BW	WW	YW	MILK	MCE	MWWT	STAY	DOC	CW	REA	MARB		API	TI
EPD	+13.7	-0.5	+69.7	+114.8	+21.3	+8.6	+56.2	+15.7	+13.4	41.4	0.49	0.4	INDEX	148.75	82.05
Acc	0.41	0.47	0.43	0.42	0.08	0.17	0.2	0.28	0.33	0.33	0.31	0.32			
%RK	20	15	80	55	50	15	70	50	40	15	95	10	%RK	10	10

NOTES:



PURCHASER:

PRICE: \$

LOT 103

WOONALLEE REMBRANDT U658

BORN: 16/9/2023
 REG: WEE0U658
 EYE: 100/100
 COLOUR: Homo Black
 HORN: Homo Polled

• MILLAH MURRAH PARATROOPER P15

SIRE MILLAH MURRAH REMBRANDT R48

• MILLAH MURRAH ABIGAIL N60

• LANCASTER JUGGLER J155

DAM WOONALLEE ENERGY P351

• WOONALLEE ENERGY L270

	CE	BW	WW	YW	MILK	MCE	MWWT	STAY	DOC	CW	REA	MARB		API	TI
EPD	+13.0	+0.4	+66.8	+113.9	+23.3	+8.6	+56.7	+14.9	+16.8	31.3	0.35	0.49	INDEX	149.11	81.92
Acc	0.4	0.46	0.41	0.41	0.06	0.15	0.18	0.27	0.33	0.32	0.31	0.3			
%RK	25	25	85	60	35	15	70	55	10	40	100	4	%RK	10	10

NOTES:



PURCHASER:

PRICE: \$

LOT 104 WOONALLEE REMBRANDT U506

BORN: 25/8/2023
 REG: WEE1U506
 EYE: 100/100
 COLOUR: Homo Black
 HORN: Homo Polled

• MILLAH MURRAH PARATROOPER P15

• CNS DREAM ON L186

SIRE MILLAH MURRAH REMBRANDT R48

DAM PERT DREAM ON D10

• MILLAH MURRAH ABIGAIL N60

• SAROKOS PARK MISS LUCKY ONE A1

	CE	BW	WW	YW	MILK	MCE	MWWT	STAY	DOC	CW	REA	MARB		API	TI
EPD	+17.2	-0.3	+65.1	+104.4	+17.8	+11.1	+50.3	+13.3	+12.9	34.7	0.43	0.43	INDEX	146.85	79.41
Acc	0.39	0.44	0.41	0.4	0.12	0.17	0.22	0.28	0.33	0.35	0.33	0.32			
%RK	3	15	90	80	80	1	90	75	45	30	100	10	%RK	15	15

NOTES:



PURCHASER:

PRICE: \$

LOT 105 WOONALLEE REMBRANDT U578

BORN: 6/9/2023
 REG: WEE1U578
 EYE: 100/100
 COLOUR: Homo Black
 HORN: Polled

• MILLAH MURRAH PARATROOPER P15

• WOONALLEE LIEUTENANT

SIRE MILLAH MURRAH REMBRANDT R48

DAM WOONALLEE DEW IT RIGHT N513

• MILLAH MURRAH ABIGAIL N60

• WEBB DEW IT RIGHT H0879

	CE	BW	WW	YW	MILK	MCE	MWWT	STAY	DOC	CW	REA	MARB		API	TI
EPD	+17.1	-2.1	+55.1	+90.4	+18.0	+8.8	+45.6	+13.9	+14.5	25.7	0.28	0.39	INDEX	145.7	75.04
Acc	0.41	0.48	0.42	0.41	0.08	0.16	0.19	0.28	0.33	0.34	0.31	0.33			
%RK	3	4	100	95	80	10	100	70	25	65	100	10	%RK	15	15

NOTES:



PURCHASER:

PRICE: \$

LOT 106 WOONALLEE REMBRANDT U538

BORN: 31/8/2023
 REG: WEE1U538
 EYE: 100/100
 COLOUR: Homo Black
 HORN: Homo Polled

• MILLAH MURRAH PARATROOPER P15

• WOONALLEE JET

SIRE MILLAH MURRAH REMBRANDT R48

DAM WOONALLEE MISS LEGACY M356

• MILLAH MURRAH ABIGAIL N60

• WEBB MISS LEGACY F419

	CE	BW	WW	YW	MILK	MCE	MWWT	STAY	DOC	CW	REA	MARB		API	TI
EPD	+14.3	-1.3	+64.2	+102.7	+23.0	+8.7	+55.1	+14.3	+10.8	33.7	0.31	0.59	INDEX	155.14	84.1
Acc	0.41	0.47	0.41	0.4	0.08	0.16	0.19	0.26	0.32	0.33	0.31	0.31			
%RK	15	10	90	80	35	10	75	65	75	35	100	2	%RK	5	5

NOTES:



PURCHASER:

PRICE: \$

LOT **107**

WOONALLEE GPS U572

BORN: 5/9/2023
 REG: WEE2U572
 EYE: 100/100
 COLOUR: Homo Black
 HORN: Homo Polled

• KOCH BIG TIMBER 685D

SIRE BRIDLE BIT GPS H078

• BRIDLE BIT MISS F840

• GIBBS 2654Z BULLET PROOF

DAM GIBBS 5319C LOUISE Y534

• SSF BLK LOUISE Y534

	CE	BW	WW	YW	MILK	MCE	MWWT	STAY	DOC	CW	REA	MARB		API	TI
EPD	+15.0	-1.8	+79.2	+125.0	+27.4	+9.7	+67.0	+16.2	+5.3	38.4	0.44	0.2	INDEX	146.24	85.4
Acc	0.44	0.49	0.49	0.49	0.21	0.26	0.3	0.33	0.45	0.42	0.4	0.41			
%RK	15	4	45	35	10	4	20	40	100	20	100	30	%RK	15	15

NOTES:



PURCHASER:

PRICE: \$

LOT **108**

WOONALLEE CONVERSION U581

BORN: 6/9/2023
 REG: WEE1U581
 EYE: 100/100
 COLOUR: Homo Black
 HORN: Homo Polled

• MILLAH MURRAH CONVERSION L298

SIRE WOMBRAMURRA Q129

• WOMBRAMURRA XSIM MISS L ONE K2

• WEBB UPPERCUT H0613

DAM WOONALLEE BOOMTIME M348

• PATHFINDER BOOMTIME E463

	CE	BW	WW	YW	MILK	MCE	MWWT	STAY	DOC	CW	REA	MARB		API	TI
EPD	+6.7	+2.6	+68.0	+97.5	+27.5	+5.0	+61.5	+14.7	+7.9	26.2	0.56	0.38	INDEX	127.87	75.88
Acc	0.41	0.47	0.42	0.42	0.11	0.18	0.21	0.26	0.35	0.34	0.32	0.33			
%RK	85	55	85	90	10	65	45	60	95	60	90	10	%RK	45	45

NOTES:

PURCHASER:

PRICE: \$

LOT **109**

WOONALLEE PARATROOPER U644

BORN: 14/9/2023
 REG: WEE1U644
 EYE: 100/100
 COLOUR: Homo Black
 HORN: Homo Polled

• MILLAH MURRAH PARATROOPER P15

SIRE WOONALLEE R475

• WOMBRAMURRA L030

• MILLAH MURRAH KLOONEY K42

DAM WOONALLEE R455

• WOMBRAMURRA L045

	CE	BW	WW	YW	MILK	MCE	MWWT	STAY	DOC	CW	REA	MARB		API	TI
EPD	+11.7	+0.1	+70.8	+98.5	+24.2	+7.0	+59.6	+14.1	+9.0	9.3	0.12	0.36	INDEX	136.67	80.02
Acc	0.4	0.47	0.42	0.41	0.07	0.16	0.19	0.26	0.34	0.34	0.31	0.32			
%RK	35	20	75	90	30	35	55	65	90	100	100	15	%RK	30	30

NOTES:

PURCHASER:

PRICE: \$



Woonallee Trojan (P) – Top priced bull from 2024 sale selling for \$40,000 to Mia Boers, MB Simmentals Holbrook, NSW.



Woonallee Rendezvous T687 (PP) Top priced bull from Tamworth 2024 sale selling for \$26,000 to Jess Adams from Heart and Spade Simmentals, Londonderry, NSW.



Lot 33 - Woonallee S.K.W. U514